

ULTRA HIGH PRESSURE GAUGES

WETTED PARTS -NACE MR0175

AISI 316L SS , HASTELLOY-C276 , INCONEL 625 , MONEL 400



the pressure equipment safety authority



Ranges available up to 60,000 psi

EXCELPLUS MOVEMENT-PMI TESTED -ACCURACY 0.5% -MIRROR DIAL/
DIAL FLUORESCENT /GLOW IN DARK -KNIFE EDGE POINTER

ELITE INSTRUMENTS

ISO 9001 COMPANY

PRESSURE GAUGE | THERMOMETER | DIAPHRAGM SEAL | ACCESSORIES

www.elite-instrument.com

www.elite-instruments.com

SPECIAL FEATURES

- Phenolic Case With Solid Front Design
- Blow out back
- Standard followed ASME-B.40.1
- Helium Leak Tested
- Built in Stabilizer Movement
- Ready For Oxygen Use
- Internal Vacuum /Over Pressure Stops
- IP 66



SPECIFICATIONS

- Ambient Temperature: -4 °F (-20°C) to +150°F (+65°C)
- Process Temperature: Max. 392°F(200°C)
- Operating Pressure Range: 75% of scale value
- Over Pressure Limit: 150% of Max. scale value
- Case & Bezel: Phenolic
- Joints: Tig Argon Arc Welding
- Protection: IP 66
- Socket: AISI 316L

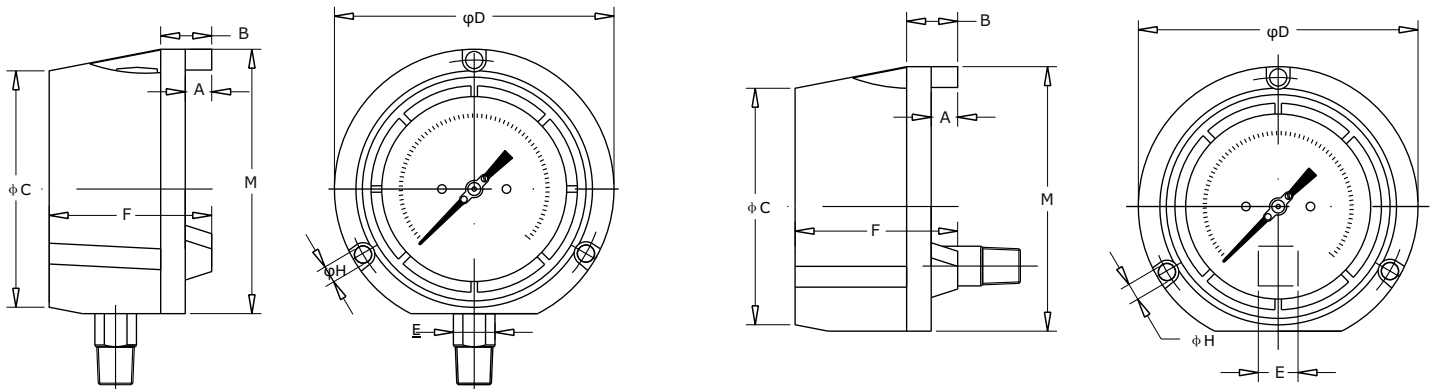
- Bourdon: AISI 316L
- Movement: AISI 304
- Dial: Aluminum
- Pointer: Micro Zero Adjustable
- Window: Safety Glass
- Gasket: Viton
- Ranges: Vacuum to 40,000psi

ACCURACY AS PER ASME B.40.1

4.5" : 0.5-0.5-0.5 (Grade 2A)

WETTED PARTS

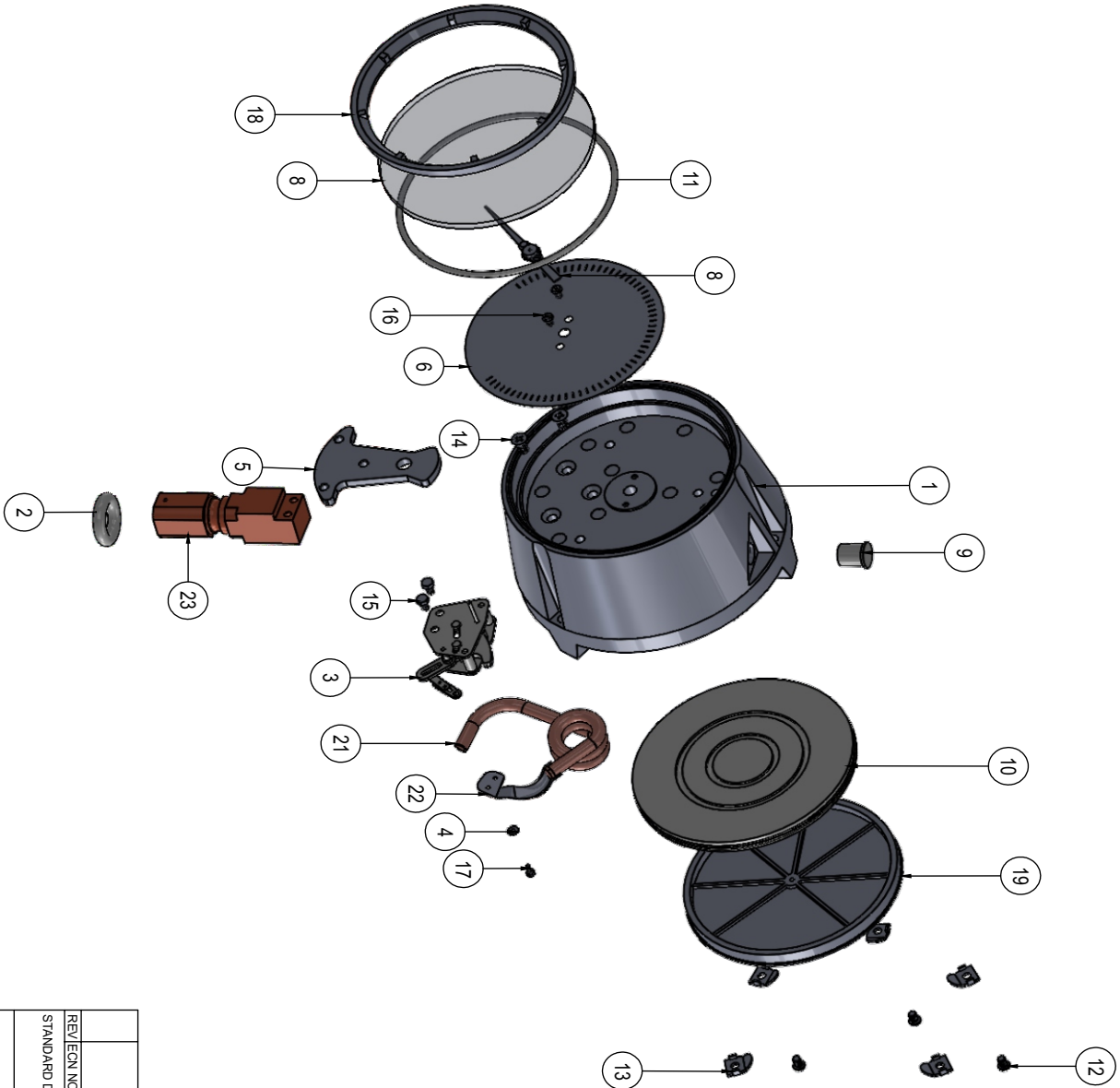
SS316L / MONEL 400 / HASTELLOY C-276 / INCONEL / Ni SPAN.



NS	A	B	φC	φD	E	F	φG	φH	M	Weight (lbs)
4.5"	0.6"	1.0"	5.1"	5.8"	0.87"	3.4"	5.4"	0.2"	5.6"	2.38

NS	A	B	φC	φD	E	F	φG	φH	M	Weight (lbs)
4.5"	0.6"	1.0"	5.1"	5.8"	0.87"	3.4"	5.4"	0.2"	5.6"	2.38

*For More Details , Refer Pressure Gauge Catalogue.



NOTES
 1. ALL DIMENSIONS ARE IN MM
 2. SHARP EDGES SHOULD BE REMOVED
 3. MARK DIMENSIONS ARE CRITICAL

SR NO.	ITEM NUMBER	DESCRIPTION	MATERIAL	QTY.
1	BK4050	4.5" LM PHENOLIC CASE	PHENOLIC	1
2	M690	SOCKET O RING VITON 30X6.5	VITON	1
3	BLX4003	4" -G16 STAINLESS STEEL THICK GEAR LIP MOVEMENT	SS304/SS316	1
4	DP003	FLAT WASHER 2X3X0.5MM	SS304	1
5	JTKP002-PPC	Bf-9MM SS PLATE FOR SOCKET	SS304	1
6	BD108	BLANK DIAL 108MM 1 HOLE 6MM ONLY	ALUMINIUM	1
8	ZZ019	YC100 MICRO-ADJUSTABLE POINTER	ALUMINIUM	1
8	BL1045	Y117X4 SAFETY GLASS	GLASS	1
9	M697	12MM VITON OIL PLUG (PPC)	VITON	1
10	M691	BACK COVER GASKET FOR PHENOLIC CASE(LM)	VITON	1
11	M679	120X3 VITON O RING	VITON	1
12	BL.S101-1	M4 PLASTIC SCREW (PPC)	PLASTIC	6
13	DP008	BACK PLATE STOPPER	PLASTIC	6
14	BL.S037	M5X10 CROSS HEAD STAINLESS STEEL SCREW	SS304	3
15	BL.S061	M4X6 STAINLESS STEEL SCREW	SS304	2
16	BL.S121	CROSS FLAT HEAD SCREW M3X5 FOR PPC	SS304	2
17	BL.S003	ADJUSTABLE SCREW M2X4.5X7.0	SS304	1
18	BK4050.BZ	4.5" LM PPC BEZEL	PHENOLIC	1
19	BK4050.BP	4.5" BACK PLATE OF PPC CASE	PHENOLIC	1
21	BGZ4024	4" SS 316L BT 0-2000DPSI	SS316L	1
22	LG009	LINKAGE 4"HP TUBE END	SS 304	1
23	BL6168	4.5" LM 9/16-18 UNEF (F) PHENOLIC SOCKET	SS316L INCONEL	1

REV/ECN NO.	ALTERNATIONS	DATE	MARK	SIGN
STANDARD DETAILS:				
DRAWING NO.	REV NO. 0	PART NAME: 4.5" PHENOLIC CASE GAUGE EXPLODED		
NO. OF SHEETS: 1	SHEET NO: 1 OF 1	ELITE INSTRUMENTS INDIA		
SPL PLOT NO.3 APIC - PHASE -IPEDDAPURAM-5334437 EG.DIST . ANDHRA PRADESH				

DRAWN BY	SS	CHECKED BY	YZ	APPROVED BY	DP
DATE		DATE		DATE	
NET WT :		GROSS WT :			

SPECIAL FEATURES

- Standard Followed ASME-B 40.1 / EN837-1
- Stainless Steel Case With Solid Front Design
- Wetted Parts AISI 316L Stainless Steel
- Build in Stabilizer Movement
- Dry or Liquid Version
- Silicone fillable version availability
- NACE MR 0175 Compliance
- Helium Leak Tested
- Laser Welded Case Design
- Ready For Oxygen Service
- Internal Vacuum/ Over pressure Stops
- IP 66



SPECIFICATIONS

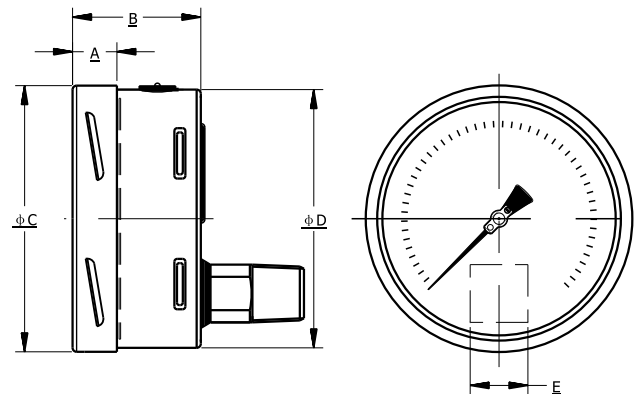
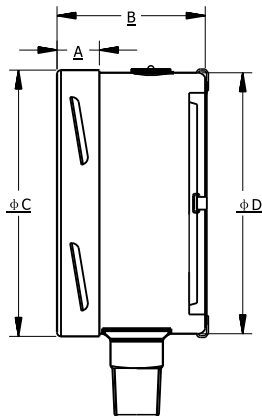
- Ambient Temperature: -4 °F (-20°C) to +150°F (+65°C)
- Process Temperature: Max. 392°F (200°C)
- Operating Pressure Range: 75% of Scale Value
- Over Pressure Limit: 125% of Max. Scale Value
- Case: AISI 304 SS
- Joints: Tig Argon Arc Welding
- Socket: AISI 316L SS
- Bourdon: AISI 316L SS
- Movement: AISI 304 SS
- Dial: Aluminum
- Pointer: Micro Zero Adjustable
- Window: Safety Glass
- Range: Vacuum to 20,000PSI FOR 2.5"(63mm)
- Vacuum to 40,000PSI FOR 4" (100mm),4.5"(125mm)
- Vacuum to 60,000PSI FOR 6"(160mm)

ACCURACY AS PER ASME B.40.1/ EN 837-1

- 2.5" (63mm) GRADE A, 1.6% / GRADE 1A,1%
- 4" (100mm) /4.5" (125mm)/6" (125mm) GRADE 1A, 1% / GRADE 2A, 0.5%

WETTED PARTS

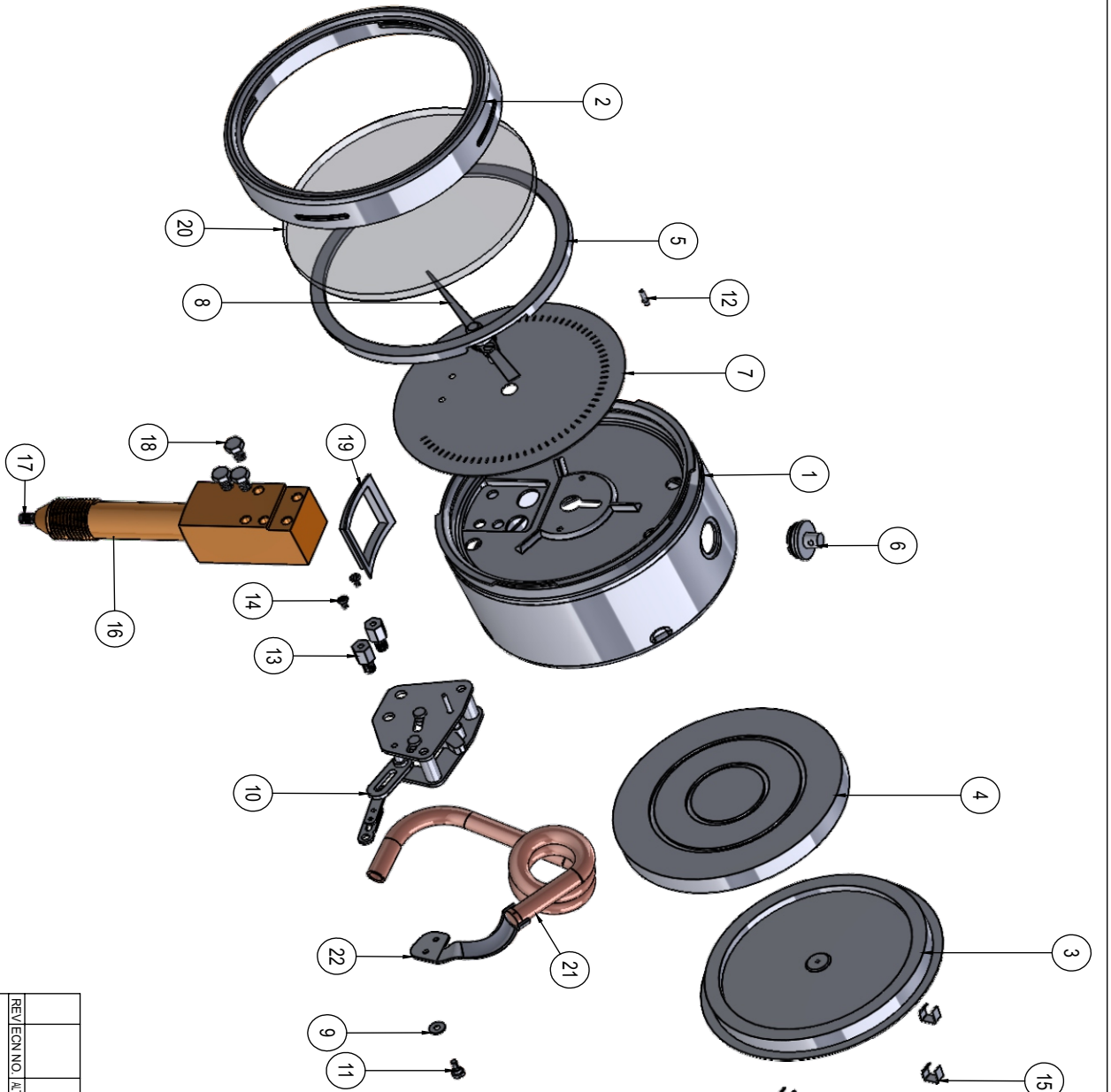
SS316L / MONEL 400 / HASTELLOY C-276 / INCONEL / Ni SPAN.



NS	A	B	φC	φD	E	Weight (lbs)
2.5"	0.5"	1.7"	2.5"	2.4"	0.6"	0.44
4"	0.6"	2.2"	4"	3.9"	0.87"	1.50
4.5"	0.6"	2.2"	5"	4.5"	0.87"	2.12
6"	0.6"	2.2"	6.3"	6.2"	0.87"	2.91

NS	A	B	φC	φD	E	Weight (lbs)
2.5"	0.5"	1.4"	2.5"	2.4"	0.6"	0.44
4"	0.6"	2"	4"	3.9"	0.87"	1.50

*For More Details , Refer Pressure Gauge Catalogue.



NOTES
 1. ALL DIMENSIONS ARE IN MM
 2. SHARP EDGES SHOULD BE REMOVED
 3. MARK DIMENSIONS ARE CRITICAL

SR NO.	ITEM NUMBER	DESCRIPTION	MATERIAL	QTY.
1	BK 4040	Y100 LM SOLID FRONT CASE	SS 304	1
2	ZQ4005	Y100 ORIGINAL FINISH SS304 BAYONET BEZEL	SS 304	1
3	BK5040	Y100 SOLID FRONT BACK COVER	SS 304	1
4	M642	VITON BACK GASKET(SOLID FRONT CASE)	VITON	1
5	M500	Y100 VITON GASKET	VITON	1
6	M630	12.8MM VITON ON/OFF OIL PLUG	VITON	1
7	BDXXX	DIAL	ALUMINIUM	1
8	Z2019	Y100 MICRO-ADJUSTABLE POINTER	ALUMINIUM	1
9	DP003	FLAT WASHER 2X6X0.5MM	SS304	1
10	BAX4005	4" -G16 SS THICK GEAR LP MOVEMENT WITH DOUBLE LOCK 12'23	SS304 / SS316	1
11	BLS003	ADJUSTABLE SCREW M2X4.5X7.0	SS 304	1
12	XZ005	6" CHROME PLATED ZERO STOP 7.8*1.5	CHROME PLATED	1
13	FBKL3072	M4 STAINLESS STEEL LENGTHEN SCREW (SOLID FRONT CASE)	SS 304	2
14	BL5026	M2*2 STAINLESS STEEL FLAT HEAD SCREW/ SAFETY PARTS	SS 304	2
15	ZQ4049	Y100 SOLID FRONT 4 PIECES SAFETY PARTS	SS304	4
16	B45123-3	4" LM 9/16 UNF(M) 1-P-C WELDING HP SS316 SOCKET 12'23	SS 316	1
17	BZM005	M4 SCREW IN STAINLESS STEEL DAMPENING SCREW SS316	SS 304	1
18	BLS051	M4X6 STAINLESS STEEL SCREW HBX&5 FOR PPC	SS 304	3
19	HT1003	LASER WELDING SS SQUARE RING	SS 304	1
20	BL1008	96mm SAFETY GLASS	GLASS	1
21	BG24024	4" SS 316L BT 0-20000PSI	SS 316L	1
22	LQ1009	4" HP TUBE END	SS 304	1

REVISION NO.	ALTERATION/ISSUE	MARK	DATE	SIGN
STANDARD DETAILS:				
DRAWN BY	SS			
CHECKED BY	YZ			
APPROVED BY	DP			
DATE				
ELITE INSTRUMENTS INDIA SPL. PLOT NO.3,APJC, PHASE-II PEDDAPURAM-533437 EGI DIST, ANDHRA PRADESH				
DRAWING NO.	REV NO. : 0	SHEET NO. 1 OF 1		
NO OF SHEETS : 1	MOC :	ITEM CODE :	NET WT :	GROSS WT :
QTY. :				



the pressure equipment safety authority

NS : 40 / 50 / 63 / 80 /
100 / 125 / 160 /
200 / 250mm

**Ranges
available up
to 60,000 psi**

**WETTED PARTS -AVAILABLE
SS 316L , HASTELLOY-C276 ,
INCONEL 625 , MONEL 400**

- Bourdon Tube - AS PER NACE MR 0175
- Socket - AS PER NACE MR 0175
- Bourdon Tube - Seamless Tube
- Tig Welding - Approved by TUV
- Leak Testing - Helium Leak Tested
- Movement - Silicone Jelly Movement
- Dial - White Aluminum
- Window - Safety Glass
- Gasket - NBR
- Blow out Disc - Temperature Compensated
- IP Protection - IP 68

www.elite-instrument.com

www.elite-instruments.com