

## SPECIAL FEATURES

Economic Version  
 RANGE 0-300 psi  
 Standard Followed ASME -B.40.1 / EN837-1  
 Fire sprinkler systems application  
 IP:53

## SPECIFICATIONS

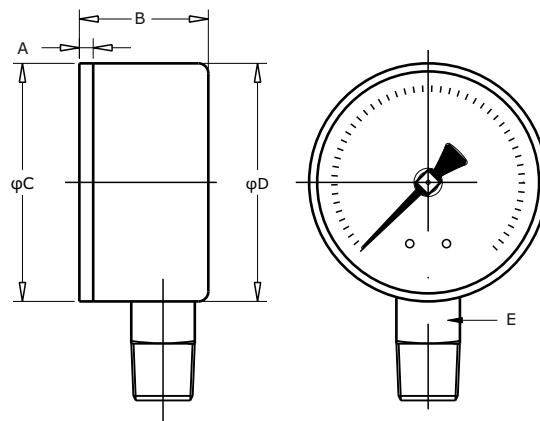
Ambient Temperature: -4°F(-20°C) to +150°F(+65°C)  
 Process Temperature: Max.250°F (120°C)  
 Operating Pressure Range: 75% of Scale Value  
 Over Pressure Limit: 120% of Max.Scale Value  
 Case: ABS Plastic Case  
 Joints: Alloy Brazing/Soldering  
 Socket: Copper Alloy  
 Bourdon: Copper Alloy  
 Movement: Copper Alloy  
 Dial:Aluminum  
 Pointer: Fixed  
 Window: Snap in Plastic Lens  
 Range: 300psi



## ACCURACY AS PER ASME B.40.1

4" 2-1-2 (GRADE A)

\*Please consult factory for better accuracy availability.



NS	A	B	φC	φD	E	Weight (lbs)
4"	0.14"	1.2"	3.9"	3.9"	0.55"	0.82

## HOW TO ORDER

Example

### NOMINAL SIZE

F

X

4 "

### TYPE OF MOUNTING

X

- 1 WALL/SURFACE/PROJECTION MOUNTING WITH BOTTOM
- 2 BOTTOM

### GAUGE CONNECTION

XXX

- 2BM** 1/4" BSP(M)
- 2NM** 1/4" NPT(M)
- 3BM** 3/8" BSP(M)
- 3NM** 3/8" NPT(M)
- 4BM** 1/2" BSP(M)
- 4NM** 1/2" NPT(M)
- 4MM** M20 X 1.5(M)

\*\*\*Please consult factory for any special connections

### OPTIONAL EXTRAS

XX

- |                                                  |                                                                               |
|--------------------------------------------------|-------------------------------------------------------------------------------|
| <b>SG</b> OXYGEN SERVICE (FOR DRY VERSION)       | <b>RW</b> PLEXI GLASS                                                         |
| <b>SF</b> MOVEMENT WITH DAMPENING JELLY          | <b>RZ</b> TOUGHENED GLASS                                                     |
| <b>RH</b> CUSTOM DESIGNED DIAL                   | <b>SJ</b> MAXIMUM READING POINTER WITH PLEXI GLASS (FOR DRY VERSION)          |
| <b>ZB</b> RECEIVER RANGE                         | <b>FK</b> INTEGRAL DAMPENING SCREW (BRASS)                                    |
| <b>ZC</b> FREON RANGE (WITH TEMPERATURE SCALE)   | <b>GH</b> MATERIAL TEST CERTIFICATES                                          |
| <b>ZD</b> AMMONIA RANGE (WITH TEMPERATURE SCALE) | <b>PW</b> FIVE POINT CALIBRATION CERTIFICATE NATIONAL/INTERNATIONAL STANDARDS |
| <b>SW</b> DIAL TAG MARKING                       |                                                                               |

**Ordering Example: P-40-X-X-XXX-(E15)-XX**