

SPECIAL FEATURES

- Standard Followed ASME-B 40.1 / EN837-3
- Compact Design
- External Zero Adjustable
- Ready For Oxygen Service
- IP 65

SPECIFICATIONS

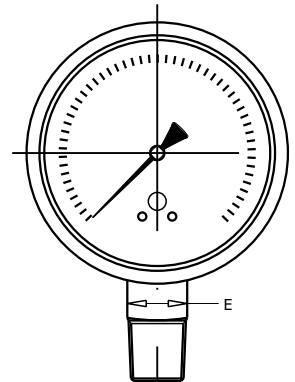
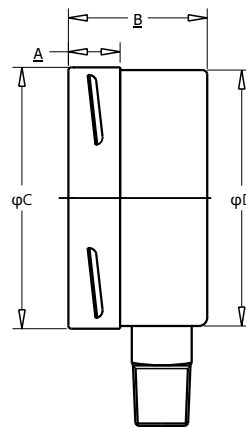
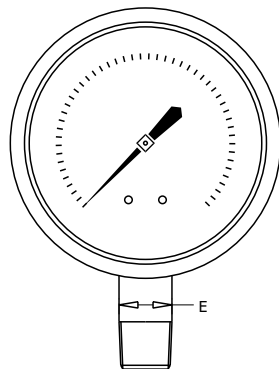
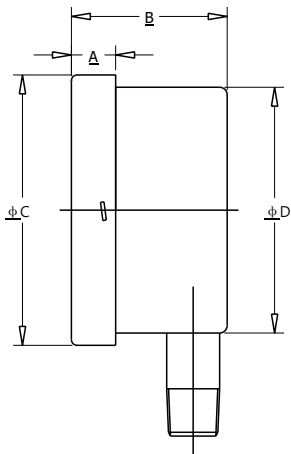
- Ambient Temperature: -4°F(-20°C) to + 150°F(+65°C)
- Process Temperature: Max.212°F (100°C)
- Operating Pressure Range: 75% of Scale Value
- Over Pressure Limit: Not Suitable
- Case: AISI 304 SS
- Joints: Alloy brazing/Soldering
- Socket: Copper Alloy
- Capsule: Copper Alloy
- Movement: Copper Alloy
- Dial: Aluminum
- Pointer: Fixed
- Window: Sheet Glass
- Range: -250"WC - 0 to 0-250"WC



ACCURACY AS PER ASME B.40.1

2.5"/4"/6" 2-1-2 GRADE A)

*Please consult factory for better accuracy availability.



NS	A	B	φC	φD	E	Weight (lbs)
2.5"	0.5"	1.6"	2.8"	2.6"	0.6"	0.26

NS	A	B	φC	φD	E	Weight (lbs)
4"	0.6"	1.9"	4"	3.9"	0.87"	1.50
6"	0.6"	1.9"	6.3"	6.2"	0.87"	2.65

HOW TO ORDER

Example

NOMINAL SIZE

D	F	H
2.5"	4"	6"

X

TYPE OF MOUNTING

- 1 WALL/SURFACE/PROJECTION MOUNTING WITH BOTTOM
- 2 BOTTOM
- 3 LOWER BACK
- 4 CENTER BACK
- 5 LOWER BACK WITH FRONT FLANGE
- 6 LOWER BACK WITH MOUNTING BRACKET
- 7 CENTER BACK WITH FRONT FLANGE
- 8 CENTER BACK WITH MOUNTING BRACKET

X

GAUGE CONNECTION

- 2BM** 1/4" BSP(M)
- 2NM** 1/4" NPT(M)
- 3BM** 3/8" BSP(M)
- 3NM** 3/8" NPT(M)
- 4BM** 1/2" BSP(M)
- 4NM** 1/2" NPT(M)
- 4MM** M20 X 1.5(M)

***Please consult factory for any special connections

XXX

RANGE

CODE	LPE1	LPE2	LPE3	LPE4	LPE5	LPE6	LPE7
RANGE (*WC)	-250-0	-160-0	-100-0	-60-0	-30-0	-15-0	-10-0
CODE	LPE8	LPE9	LPE10	LPE11	LPE12	LPE13	LPE14
RANGE (*WC)	-250-0	-160-0	-100-0	-60-0	-30-0	-15-0	-10-0

LPE9

OPTIONAL EXTRAS

- | | |
|--|--|
| SG OXYGEN SERVICE (FOR DRY VERSION) | RX SHATTERPROOF /SAFETY GLASS |
| SF MOVEMENT WITH DAMPENING JELLY | RZ TOUGHENED GLASS |
| RI 25mm BOD | ZM ELECTRO POLISHED CASE & BEZEL |
| SI KNIFE EDGE POINTER | CK EPOXY PAINTED CASE & BEZEL |
| FN 2" PIPE/YOKE MOUNTING BRACKET & 'U' CLAMP
(AISI 316 SS) | OS CASE WITH BAYONET TYPE BEZEL |
| RG ANTI PARALLAX MIRROR BAND DIAL | PS AISI 316 SS CASE & BEZEL |
| RH CUSTOM DESIGNED DIAL | KA ON-OFF TYPE VENT PLUG |
| AT ATEX (AS PER 2014/34/EU) | SX SS TAG PLATE |
| SW DIAL TAG MARKING | SY AISI 316SS TAG PLATE |
| RW PLEXI GLASS | FK INTEGRAL DAMPENING SCREW (BRASS) |

XX

Ordering Example: P-19-X-X-XXX-(LPE9)-XX