

SPECIAL FEATURES

- Standard Followed ASME-B 40.1 / EN837-1
- Pressure Relieving Back For Increased Safety
- Stainless Steel Case With Solid Front Design
- Wetted Parts AISI 316L Stainless Steel
- Build in Stabilizer Movement
- Dry or Liquid Version
- Silicone fillable version availability
- NACE MR 0175 Compliance
- Helium Leak Tested
- Laser Welded Design
- Ready For Oxygen Service
- Internal Vacuum/ Over Pressure Stops
- IP 66

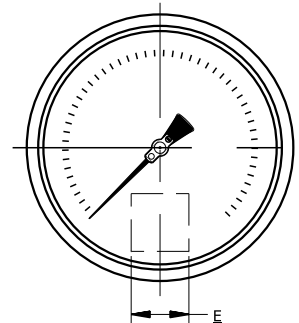
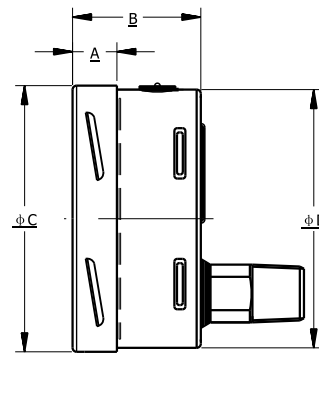
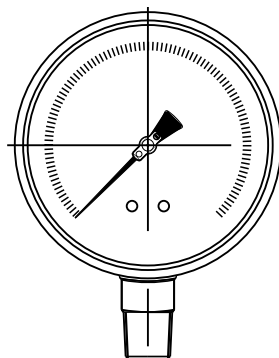
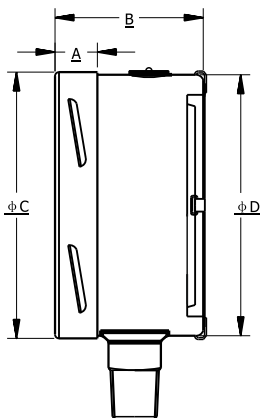


SPECIFICATIONS

- Ambient Temperature: -4 °F (-20°C) to +150°F (+65°C)
- Process Temperature: Max. 392°F (200°C)
- Operating Pressure Range: 75% of Scale Value
- Over Pressure Limit: not suitable
- Case: AISI 304 SS
- Joints: Tig Argon Arc Welding
- Socket: AISI 316L SS
- Bourdon: AISI 316L SS
- Movement: AISI 304 SS
- Dial: Aluminum
- Pointer: Micro Zero Adjustable
- Window: Safety Glass
- Range: Vacuum to 600PSI

ACCURACY AS PER ASME B.40.1

- 4"/4.5"/6" : 1-1-1 (GRADE 1A) For Range Scale Only &
- 4-3-4 (GRADE C) For End Scale Only (End scale covered with triangle)



NS	A	B	φC	φD	E	Weight (lbs)
4"	0.6"	2.2"	4"	3.9"	0.87"	1.50
4.5"	0.6"	2.2"	5"	4.5"	0.87"	2.12
6"	0.6"	2.2"	6.3"	6.2"	0.87"	2.91

NS	A	B	φC	φD	E	Weight (lbs)
4"	0.6"	2"	4"	3.9"	0.87"	1.50

HOW TO ORDER

Example

NOMINAL SIZE

F	G	H
4"	4.5"	6"

X

TYPE OF MOUNTING

- 1 WALL/SURFACE/PROJECTION MOUNTING WITH BOTTOM
- 2 BOTTOM
- 3 LOWER BACK
- 5 LOWER BACK WITH FRONT FLANGE
- 6 LOWER BACK WITH MOUNTING BRACKET

X

GAUGE CONNECTION

- 2BM** 1/4" BSP(M)
- 2NM** 1/4" NPT(M)
- 3BM** 3/8" BSP(M)
- 3NM** 3/8" NPT(M)
- 4BM** 1/2" BSP(M)
- 4NM** 1/2" NPT(M)
- 4MM** M20 X 1.5(M)

XXX

***Please consult factory for any special connections

RANGE

E13

CODE	E1	E2	E3	E4	E5	E6	E7	E8	E9
RANGE (mbar/°WC)	-30"hg	-30"hg-15	-30"hg-30	-30"hg-60	-30"hg-100	-30"hg-160	-30"hg-200	-30"hg-300	15
CODE	E10	E11	E12	E13	E14	E15	E16	E17	E18
RANGE (mbar/°WC)	30	60	100	160	200	300	400	500	600

OPTIONAL EXTRAS

XX

- | | |
|--|---|
| <ul style="list-style-type: none"> SG OXYGEN SERVICE (FOR DRY VERSION) OA ACCURACY + 0.5% OF F.S. TI MONEL BOURDON & SOCKET (MONEL VERSION) TF TESTED TO NACE STANDARD TB HELIUM LEAK TEST SD AISI 316 SS MOVEMENT SF MOVEMENT WITH DAMPENING JELLY SI KNIFE EDGE POINTER RG ANTI PARALLAX MIRROR BAND DIAL RH CUSTOM DESIGNED DIAL ZB RECEIVER RANGE AT ATEX (AS PER 2014/34/EU) ZC FREON RANGE (WITH TEMPERATURE SCALE) ZD AMMONIA RANGE (WITH TEMPERATURE SCALE) SW DIAL TAG MARKING RW PLEXI GLASS RX SHATTERPROOF /SAFETY GLASS RZ TOUGHENED GLASS SJ MAXIMUM READING POINTER WITH PLEXI GLASS ZM ELECTRO POLISHED CASE & BEZEL | <ul style="list-style-type: none"> CK EPOXY PAINTED CASE & BEZEL PS AISI 316 SS CASE & BEZEL OS CASE WITH BAYONET TYPE BEZEL KA ON-OFF TYPE VENT PLUG SX SS TAG PLATE SY AISI 316SS TAG PLATE SA INTERNAL OVERPRESSURE STOP SB INTERNAL VACUUM STOP ZL OVER RANGE PROTECTION QB INTEGRAL DAMPENING SCREW (AISI 316 SS) FL INTEGRAL DAMPENING SCREW (MONEL) FS FILLABLE LIQUID SILICON OIL FG FILLABLE LIQUID GLYCERINE ZZ DIELECTRIC OIL FILLED PX DAMPENING LIQUID FLOUROLUBE FILLED PY DAMPENING LIQUID GLYCERINE OIL FILLED PZ DAMPENING LIQUID MINERAL LIQUID FILLED QA DAMPENING LIQUID SILICON OIL FILLED GH MATERIAL TEST CERTIFICATES PW FIVE POINT CALIBRATION CERTIFICATE NATIONAL/ INTERNATIONAL STANDARDS |
|--|---|

Ordering Example: P-09-X-X-XXX-(E13)-XX