

SPECIAL FEATURES

Stainless Steel Case & Measuring System
 Static Pressure Up to 6000 psi
 Dry Or Liquid Filled
 Standard Followed AMSE -B.40.1 / EN837-3
 IP:65

SPECIFICATIONS

Ambient Temperature: -4°F(-20°C)to+150°F(+65°C)
 Process Temperature: Max.212°F (+100°C)
 Operating Pressure Range: 75% of Scale Value
 Over Pressure Limit: 125% of Max. Scale Value
 Case: AISI 304 SS
 Joints: Tig Argon Arc Welding
 Socket: AISI 316L SS
 Diaphragm: AISI 316L SS
 Movement: AISI 304 SS
 Dial:Aluminum
 Pointer: Micro Zero Adjustable
 Window: Safety Glass
 Range: 15"WC-160PSI

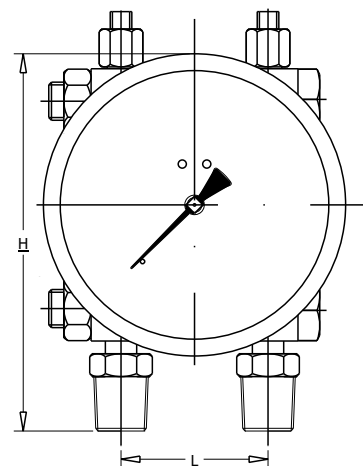
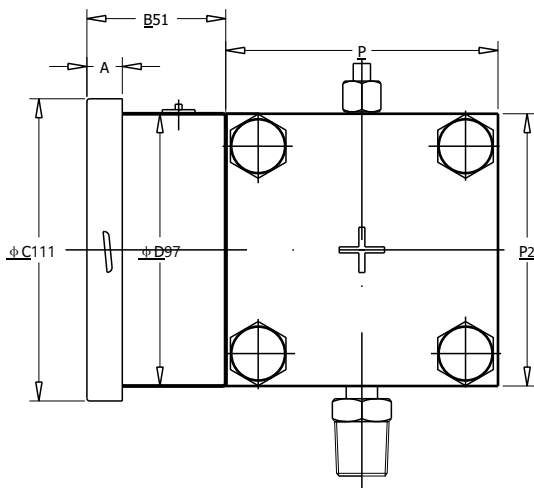


ACCURACY AS PER ASME B.40.1

4"/6" : 3-1-3 (GRADE B)

4"/6" : 2-1-2 (GRADE A)

*Please consult factory for better accuracy availability.



NS	A	B	φC	φD	P	P2	P2	L	Weight (lbs)
4"	0.5"	2"	4.4"	3.8"	4"	4"	5.6"	2"	6.6
6"	0.6"	2.2"	5.9"	5.8"	4"	4"	6.2"	2"	17.6

HOW TO ORDER

Example

NOMINAL SIZE

F H
4" 6"

X

TYPE OF MOUNTING

- 1 WALL/SURFACE/PROJECTION MOUNTING WITH BOTTOM
- 2 BOTTOM
- 9 2" PIPE/YOKE MOUNTING WITH BOTTOM ENTRY

X

GAUGE CONNECTION

- 3BM** 3/8" BSP(M)
- 3NM** 3/8" NPT(M)
- 4BM** 1/2" BSP(M)
- 4NM** 1/2" NPT(M)
- 4MM** M20 X 1.5(M)

***Please consult factory for any special connections

XXX

SEAL CHAMBER (*Consult Factory for Specification, Price and Delivery)

- | | | |
|----------------------------------|------------------------|--------------------------|
| TK AISI 304SS | TX MONEL | TZ PVC* |
| TM AISI 316L SS | TT HASTELLOY C' | UA PVDF* |
| TL AISI 316L SS(Standard) | UD TANTALUM | TY POLYPROPELENE* |
| UH TITANIUM | | |

X

DIAPHRAGM

- | | | |
|----------------------------------|--------------------|-----------------------|
| UJ AISI 316L SS(Standard) | UR TITANIUM | UL HASTELLOY'C |
| UM MONEL | UQ TANTALUM | |

X

FILLING FLUIDS (*Consult Factory for Specification, Price and Delivery)

- | | |
|--|---------------------------------------|
| US FLUROLUBE 4.2[-45 to 175°C] | UY SILICON DC 704(10 to 337°C) |
| UT FLUROLUBE 6.3[-40 to 235°C] | UZ SILICON DC 710(7 to 371°C) |
| UU FLUROLUBE FS-5[-28 to 148°C] | VA SYLTHERM 800(-40 to 315°C) |
| UV FOOD GRADE OIL[-20 to 140°C] | VB SYLTHERM XLT(-100 to 260°C) |
| UX SILICON DC 200[-40 to 205°C](Standard) | VC HALOCARBON OIL* |

X

RANGE

LPE9

CODE	LPE7	LPE8	LPE9	LPE10	LPE11	LPE12
RANGE ("WC)	15"WC	30"WC	35"WC	60"WC	100"WC	160"WC
CODE	LPE13	LPE14	LPE15	LPE16	LPE17	LPE18
RANGE (psi)	10psi	15psi	30psi	60psi	100psi	160psi

OPTIONAL EXTRAS

XX

- | | |
|---|--|
| TI MONEL DIAPHRAGM & CHAMBER (MONEL VERSION) | CK EPOXY PAINTED CASE & BEZEL |
| TF TESTED TO NACE STANDARD | OS CASE WITH BAYONET TYPE BEZEL |
| TB HELIUM LEAK TEST | PS AISI 316 SS CASE & BEZEL |
| SD AISI 316 SS MOVEMENT | KA ON-OFF TYPE VENT PLUG |
| SI KNIFE EDGE POINTER | SX SS TAG PLATE |
| FN 2" PIPE/YOKE MOUNTING BRACKET & 'U' CLAMP (AISI 316 SS) | SY AISI 316 SS TAG PLATE |
| RG ANTI PARALLAX MIRROR BAND DIAL | FS FILLABLE LIQUID SILICON OIL |
| RH CUSTOM DESIGNED DIAL | FG FILLABLE LIQUID GLYCERINE |
| SW DIAL TAG MARKING | ZZ DIELECTRIC OIL FILLED |
| RW PLEXI GLASS | PX DAMPENING LIQUID FLOUROLUBE FILLED |
| RX SHATTERPROOF / SAFETY GLASS | PY DAMPENING LIQUID GLYCERINE OIL FILLED |
| RZ TOUGHENED GLASS | PZ DAMPENING LIQUID MINERAL LIQUID FILLED |
| SJ MAXIMUM READING POINTER WITH PLEXI GLASS FILLABLE VERSION | QA DAMPENING LIQUID SILICON OIL FILLED |
| ZM ELECTRO POLISHED CASE & BEZEL | GH MATERIAL TEST CERTIFICATES |
| | PW FIVE POINT CALIBRATION CERTIFICATE NATIONAL/ INTERNATIONAL STANDARDS |

Ordering Example: P-14-X-X-XXX-X-X-X-(LPE9)-XX