

SPECIAL FEATURES

Economical Version
 General Purpose Applications
 Standard Followed: ASME-B.40.1/EN837-1

SPECIFICATIONS

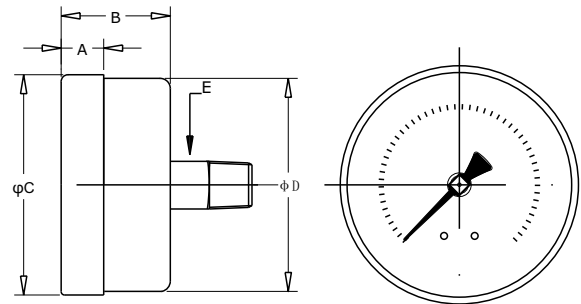
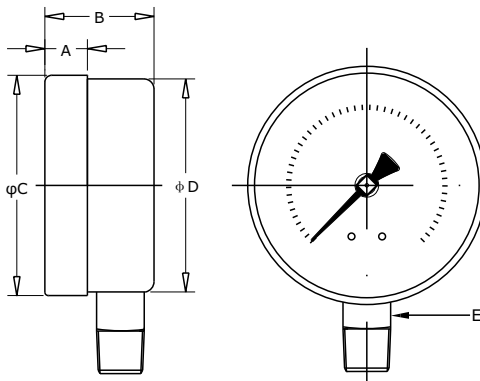
Ambient Temperature: -4°F(-20°C) to+150°F(+65°C)
 Process Temperature: Max. 250°F(120°C)
 Operating Pressure Range: 75% of Scale Value
 Over Pressure Limit: 120% of Max. Scale Value
 Case: Steel, Powder Coated
 Joints: Alloy Brazing/Soldering
 Socket: Copper Alloy
 Bourdon: Copper Alloy
 Movement: Copper Alloy
 Dial: Aluminum
 Pointer: Fixed
 Window: Sheet Glass
 Ranges: Vacuum to 6000psi



ACCURACY AS PER ASME B.40.1

1.5"/2" : 3-2-3 (Grade B)
 2.5"/3"/4" : 2-1-2 (Grade A)

*Please consult factory for better accuracy availability.



| NS | A | B | φC | φD | E | Weight (lbs) |
|------|-------|-------|-------|-------|-------|--------------|
| 1.5" | 0.4" | 1.0" | 1.5" | 1.5" | 0.4" | 0.18 |
| 2" | 0.4" | 1.1" | 2.0" | 2.0" | 0.6" | 0.22 |
| 2.5" | 0.4" | 1.1" | 2.5" | 2.5" | 0.6" | 0.29 |
| 3" | 0.5" | 1.3" | 3.0" | 3.0" | 0.7" | 0.62 |
| 4" | 0.9" | 1.5" | 4.0" | 4.0" | 0.9" | 0.82 |
| 6" | 0.8" | 1.87" | 6.3" | 6.2" | 0.87" | 2.20 |
| 10" | 0.68" | 2" | 9.84" | 9.74" | 0.87" | 3.50 |

| NS | A | B | φC | φD | E | Weight (lbs) |
|------|------|------|------|------|------|--------------|
| 1.5" | 0.4" | 1.1" | 1.5" | 1.5" | 0.4" | 0.18 |
| 2" | 0.4" | 1.1" | 2.0" | 2.0" | 0.6" | 0.22 |
| 2.5" | 0.4" | 1.1" | 2.5" | 2.5" | 0.6" | 0.29 |
| 3" | 0.5" | 1.3" | 3.0" | 3.0" | 0.7" | 0.62 |
| 4" | 0.9" | 1.5" | 4.0" | 4.0" | 0.9" | 0.82 |

HOW TO ORDER

Example

NOMINAL SIZE

| | | | | | | |
|------|----|------|----|----|----|-----|
| B | C | D | E | F | H | J |
| 1.5" | 2" | 2.5" | 3" | 4" | 6" | 10" |

X

TYPE OF MOUNTING

- 1 WALL/SURFACE/PROJECTION MOUNTING WITH BOTTOM
- 2 BOTTOM
- 4 CENTER BACK
- 7 CENTER BACK WITH FRONT FLANGE
- 8 CENTER BACK WITH MOUNTING BRACKET

X

GAUGE CONNECTION

- 1BM** 1/8" BSP(M)
- 1NM** 1/8" NPT(M)
- 1TM** 1/8" BSPT(M)
- 2BM** 1/4" BSP(M)
- 2NM** 1/4" NPT(M)
- 2TM** 1/4" BSPT(M)
- 3BM** 3/8" BSP(M)
- 3NM** 3/8" NPT(M)
- 3TM** 3/8" BSPT(M)
- 4BM** 1/2" BSP(M)
- 4NM** 1/2" NPT(M)
- 4TM** 1/2" BSPT(M)
- 4MM** M20 X 1.5(M)

***Please consult factory for any special connections

XXX

RANGE

| | | | | | | | | | | | | | |
|-------------|--------|-----------|-----------|-----------|------------|------------|------------|------------|------|------|------|------|------|
| CODE | E1 | E2 | E3 | E4 | E5 | E6 | E7 | E8 | E9 | E10 | E11 | E12 | E13 |
| RANGE (psi) | -30"hg | -30"hg-15 | -30"hg-30 | -30"hg-60 | -30"hg-100 | -30"hg-160 | -30"hg-200 | -30"hg-300 | 15 | 30 | 60 | 100 | 160 |
| CODE | E14 | E15 | E16 | E17 | E18 | E19 | E20 | E21 | E22 | E23 | E24 | E25 | E26 |
| RANGE (psi) | 200 | 300 | 400 | 500 | 600 | 800 | 1000 | 1500 | 2000 | 3000 | 4000 | 5000 | 6000 |

E13

OPTIONAL EXTRAS

- | | |
|--|---|
| SG OXYGEN SERVICE (FOR DRY VERSION) | SJ MAXIMUM READING POINTER WITH PLEXI GLASS (FOR DRY VERSION) |
| SF MOVEMENT WITH DAMPENING JELLY | ZM ELECTRO POLISHED CASE & BEZEL |
| RH CUSTOM DESIGNED DIAL | CK EPOXY PAINTED CASE & BEZEL |
| ZB RECEIVER RANGE | SQ CASE WITH ROLLING TYPE BEZEL |
| ZC FREON RANGE (WITH TEMPERATURE SCALE) | FK INTEGRAL DAMPENING SCREW (BRASS) |
| ZD AMMONIA RANGE (WITH TEMPERATURE SCALE) | GH MATERIAL TEST CERTIFICATES |
| SW DIAL TAG MARKING | PW FIVE POINT CALIBRATION CERTIFICATE NATIONAL/INTERNATIONAL STANDARDS |
| RW PLEXI GLASS | |
| RZ TOUGHENED GLASS | |
| SY AISI 316SS TAG PLATE | |

XX

Ordering Example: P-01-X-X-XXX-(E13)-XX