

SPECIAL FEATURES

- Stainless Steel Case & Stem
- Bottom/Back/Every Angle Entry
- Silicon Oil Filled (Optional)
- With or Without Thermowell
- External Zero Adjustable (Optional)
- Standard Followed En13190.

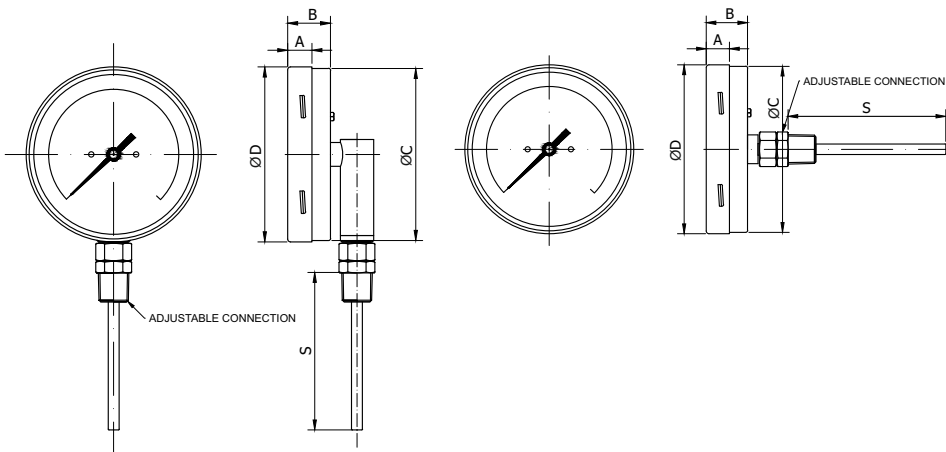
SPECIFICATIONS

- Accuracy : 1 as per EN 13190
- Ambient Temperature: -13°F (-25°C) to 108°F (60°C)
- Operating Pressure : 25bar (Without Thermowell)
- Stem Diameter: 8mm
- Case & Bezel: AISI 304 SS (Bayonet Type)
- Stem Connection: AISI 316 SS
- Joint: Tig Argon Arc Welding
- Sensing Element:Coiled Bimetal
- Protection: IP 65(EN 60529/IEC529)
- Dial: Aluminium
- Pointer: Aluminium
- Window: Safety Glass
- Gasket: NBR



APPLICATIONS

- Chemical / Refinery / Fertilizer / Petrochemicals /
- Pharmaceutical / Power /Cement / Sugar /
- Food & Beverages / Pulp & Paper & Allied
- Process Industries which are having Corrosive Media / Environment.

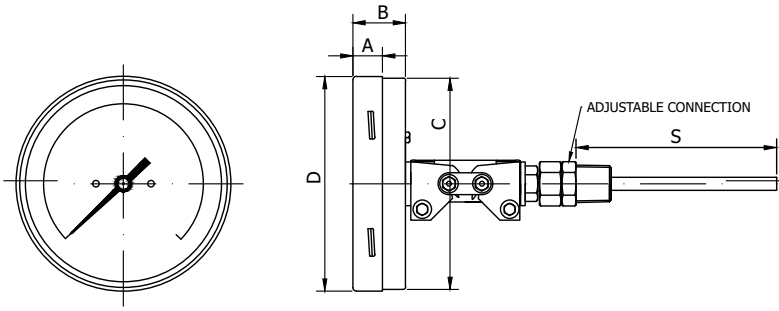


RANGE TABLE

Nominal Range, Measuring Range & Limits of Error as per En13190		
Nominal Range(°C)	Measuring Range(°C)	Limits of Error(+/-°C)
-20 to +40	-10 to +30	1
-20 to +60	-10 to +50	1
-20 to +120	-10 to +110	2
-30 to +30	-20 to +20	1
-30 to +50	-20 to +40	1
-30 to +70	-20 to +60	1
-40 to +40	-30 to +30	1
-40 to +60	-30 to +50	1
-100 to +60	-80 to +40	2
0 to 60	10 to 50	1
0 to 80	10 to 70	1
0 to 100	10 to 90	1
0 to 120	10 to 110	2
0 to 160	20 to 140	2
0 to 200	20 to 180	2
0 to 250	30 to 220	2.5
0 to 300	30 to 270	5
0 to 400	50 to 350	5
0 to 500	50 to 450	5
0 to 600	100 to 500	10

NS	A	B	ØC	ØD
63	13	23.5	62	63.5
80	13.5	26	78	80
100	13.5	26	99	100
125	18	29	126	128
160	18	29	157	160

NS	A	B	ØC	ØD
50	5.5	12.5	52	57
63	13	23.5	62	63.5
80	13.5	26	78	80
100	13.5	26	99	100
125	18	29	126	128
160	18	29	157	160



NS	A	B	ΦC	ΦD
63	13	23.5	62	63.5
80	13.5	26	78	80
100	13.5	26	99	100
125	18	29	126	128
160	18	29	157	160

HOW TO ORDER

NOMINAL SIZE	D	E	F	G	H
	2.5 "(63mm)	3"(80mm)	4"(100mm)	5"(125mm)	6"(160mm)

TYPE OF MOUNTING

- 2 BOTTOM ENTRY THROUGH ELBOW
- 4 DIRECT CENTER BACK ENTRY
- 8 EVERY ANGLE CENTER BACK ENTRY

PROCESS CONNECTION

3BM 3/8"BSP(M) (Stem Dia.Max. 9.5 & 10mm)	4MM M20X1.5 (M) (Stem Dia.Max.12mm)	6NM 3/4" NPT (M)
4BM 1/2"BSP(M) (Stem Dia.Max. 12mm)	4YN 1 1/2"TRICLOVER ** (Stem Dia.Max. 12mm)	8BM 1" BSP(M)
4NM 1/2"NPT(M) (Stem Dia.Max. 12mm)	6BM 3/4"BSP(M)	8NM 1"NPT(M)

PROCESS CONNECTION TYPE

ZI Adjustable	ZJ Fixed	KJ Revolving/Swivel
----------------------	-----------------	----------------------------

STEM DIAMETER

1U 6mm	2M 1/4"(6.35mm)	2C 8mm	2I 9.5mm	2J 10mm	2K 12mm
---------------	------------------------	---------------	-----------------	----------------	----------------

STEM LENGTH (BELOW THREAD)

Minimum Stem Length : 60 mm
Maximum Stem Length : 1000 mm

RANGE

Refer Range Table

OPTIONAL EXTRAS

PS AISI 316SS CASE & BEZEL**	RS EXTERNAL ZERO ADJUSTMENT
PW FIVE POINT CALIBRATION CERTIFICATE	RX SAFETY GLASS
QA DAMPENING LIQUID SILICON OIL (-45/200 C)	RZ TOUGHENED GLASS
PY DAMPENING LIQUID GLYCERINE (UP TO 100° C) EXCEPT ELECTRICAL CONTACT	SX SS 304 TAG PLATE
RH CUSTOM DESIGN DIAL	GH MATERIAL TEST CERTIFICATE AS PER En10204 3.1#
SW DIAL TAG MARKING	SY SS 316 TAG PLATE

Ordering Example: T-02-X-X-XXX-XX-XX-100mm-0/100°C-XX

Example

T-02

X

X

XXX

XX

XX

100mm

0/100°C

XX