

SPECIAL FEATURES

Welded Diaphragm
 Most suitable for Slurry & Corrosive Service
 Flushing Ring , Flange & Diaphragm are available in various type of SS & Exotic Materials.

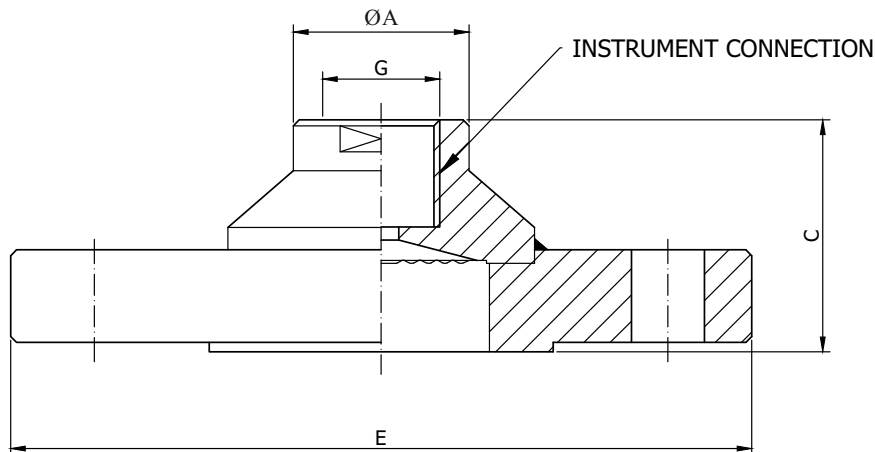
SPECIFICATIONS

Seal Type: S26= -1 to 0 kg/cm² & 0 to 250 kg/cm² (Non PTFE Lined)(Standard)
 S27= -1 to 0 kg/cm² & 0 to 40 kg/cm² (PTFE Lined)*
 Process Temperature: Max.150°C for PTFE Lined
 -40°C to 200°C or without PTFE Lined
 Instrument Connection: 1/2"NPT(F)
 Process Connection: Flange (as per DIN/BS/ANSI/JIS) 125-250 AARH
 Fill Fluid: Silicon Oil-DC 200
 Diaphragm: AISI 316L SS
 Top Chamber: AISI 316 SS
 Flange: AISI 316 SS



APPLICATIONS

Diaphragm seals are provided in the Instrument like Pressure Gauges ,Switches, Transmitters in order to isolate the sensing element from the main service due to It's Corrosive ,Viscous and Sedimented nature and to avoid clogging and solidification. These kind of seals are widely used in the Viscous & Corrosive services where flushing is required periodically & frequently.



A	C	E	G	J
30	44.5	**	1/2"NPT(F)	***

** As per standard flange table ANSI, DIN, BS, JIS, Etc.
 *** Diaphragm Dia. to suit Flange

		Example		
HOW TO ORDER				
BASIC MODEL		D-10		
SEAL TYPE				
S26 -1 to 0 kg/cm ² & 0 to 250 kg/cm ² (Non PTFE Lined) (Standard)*	S27 -1 to 0 kg/cm ² & 0 to 40 kg/cm ² (PTFE Lined)	XXX		
INSTRUMENT CONNECTION				
VP 3/8"BSP(F)	VL 1/2"BSP(F)	VM 1/2"NPT(F)(Standard)	XX	
TOP CHAMBER				
XW AISI 304 SS (Standard)	YA AISI SS316L SS	XY AISI 316 SS	YC CARBON STEEL	XX
DIAPHRAGM				
UJ AISI 316L SS (Standard)	UL HASTELLOY 'C'	UR TITANIUM	KE PTFE*	XX
UM MONEL	UP SILVER	UQ TANTALUM		
FLANGE MATERIAL				
TK AISI 304 SS	TN CARBON STEEL	UH TITANIUM	TM AISI 316 SS (Standard)	XX
TL AISI 316L SS	TX MONEL	TT HASTELLOY C	TM TANTALUM	
PROCESS CONNECTION				
As per DIN / BS / ANSI / JIS (Select Code from Flange Table.Refer Page No.25 & 26)			XX	
PROTECTION ON WETTED PARTS				
VS PTFE LINING ON BOTTOM CHAMBER("I"SECTION) -2mm THICK (Max.Up to 150°C)			XX	
VV PTFE PROTECTION FOR DIAPHRAGM (Max.Up to 150°C max up to 100 bar)				
VZ PTFE COATING ON DIAPHRAGM (Max.Up to 315°C)				
FILLING LIQUID				
US FLUROLUBE 4.2 [-45 to 175°C]	UX SILICON DC 200[-40 to 205°C] _(Standard)	VB SYLTHERM XLT [-100 to 260°C]	XX	
UT FLUROLUBE 6.3 [-40 to 235°C]	UY SILICON DC 704 [10 to 337°C]	VC HALOCARBON OIL*		
UU FLUROLUBE FS-5 [-28 to 148°C]	UZ SILICON DC 710 [7 to 371°C]			
UV FOOD GRADE OIL [-20 to 140°C]	VA SYLTHERM 800 [-40 to 315°C]			
REMOTE MOUNTING (With Capillary of Max. Up to 15 Mtrs.)				
SPECIFY IN METERS (e.g 1.5=1.5 METERS 2.0=2 METERS)			3Mtr.	
CAPILLARY				
PE AISI 304 SS	PG AISI 316 SS		XX	
CAPILLARY COVERED WITH ARMOUR (Applicable with PE or PG if selected)				
PF AISI 304 SS	PH AISI 316 SS	PI PVC	XX	
OTHER OPTIONS				
TB HELIUM LEAK TEST	TC DRY SEAL ONLY WITHOUT INSTRUMENT	GH MATERIAL TEST CERTIFICATE*	XX	

Ordering Example: D-10-XXX-XX-XX-XX-XX-XX-XX-XX-3 Mtr-XX-XX-XX