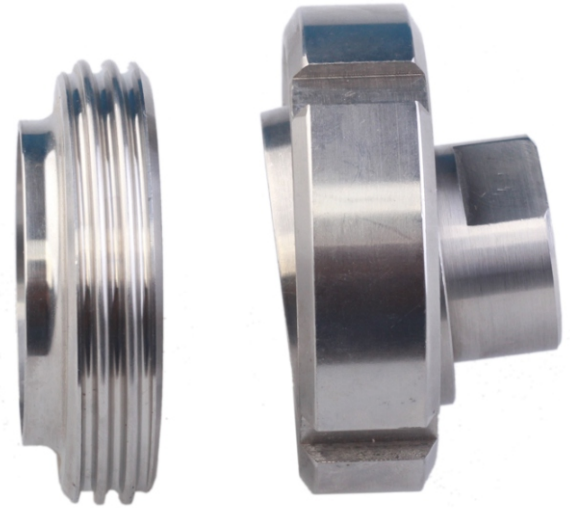


SPECIAL FEATURES

All SS316L Construction
Quick Connect and Disconnect
Matching DIN , SMS , RJT Standard.

SPECIFICATIONS

Range: Refer range table with nominal sizes.
Process Temperature: -20°C to 140°C or as per fill fluid
Instrument Connection: 1/2"NPT (F)
Process Connection: As per DIN 11851, SMS, RJT, IDF
Fill Liquid: Silicon Oil-DC 200
Mounting: Direct (Without Capillary)
Diaphragm: AISI 316L SS
Unit Nut: AISI 316 SS
Body: AISI 316 SS
Fill Fluid: Food Grade Oil

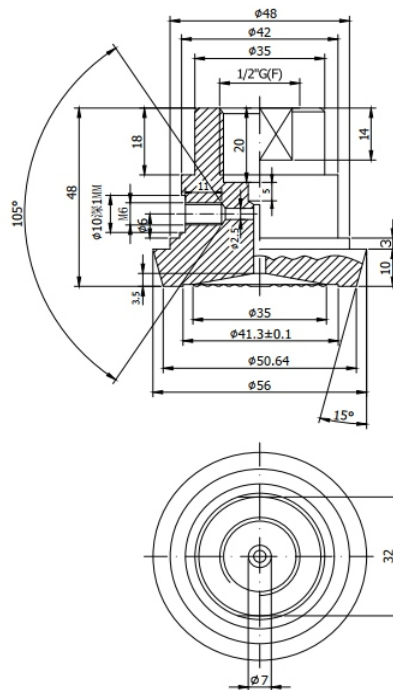


APPLICATIONS

Diaphragm seals are provided in the Instruments like Pressure Guages ,Switches, Transmitters in order to Isolate the sensing element from the main service due to it's corrosive ,Viscous and Sedimented nature and avoid clogging and solidification.

This seals are specially designed for applications where high purity in the process is essential Typically in Food, Beverages, Dairy and Pharmaceutical Industries.

DN 40



Example

HOW TO ORDER

BASIC MODEL

D-04

FLOATING RING (FEMALE): SIZE & TYPE

KH	(25*, 32, 40, 50 mm)	DIN	KJ	(1 1/2", 2")	RJT	XX(1 1/2")
KI	(1", 1 1/2", 2")	SMS	KK	(1", 1 1/2", 2")	IDF / ISS	

PROCESS CONNECTION

M	MALE	F	FEMALE	XX
----------	------	----------	--------	----

INSTRUMENT CONNECTION

VN	1/4"BSP(F)	VO	1/4"NPT(F)	XX
VL	1/2"BSP(F)	VM	1/2"NPT(F)(Standard)	

DIAPHRAGM

UJ	AISI 316L SS (Standard)	XX
-----------	-------------------------	----

FILLING FLUID

UV	FOOD GRADE OIL [-20 TO 140°C/ -4 TO 284°F] (Standard)	XX
-----------	---	----

BODY

CL	AISI 316 SS (Standard)	CM	AISI 316L SS	XX
-----------	------------------------	-----------	--------------	----

BOTTOM MATING PART

KL	(25*, 32, 40, 50 mm)	DIN	KN	(1 1/2", 2")	RJT	XX(1 1/2")
KM	(1", 1 1/2", 2")	SMS	KO	(1", 1 1/2", 2")	IDF / ISS	

OTHER OPTIONS

TB	HELIUM LEAK TEST	TC	DRY SEAL ONLY WITHOUT INSTRUMENT	GH	MATERIAL TEST CERTIFICATE*	XX
-----------	------------------	-----------	----------------------------------	-----------	----------------------------	----

Ordering Example: D-04-XX (1 1/2")-XX-XX-XX-XX-XX-XX (1 1/2")-XX