

SPECIAL FEATURES

Robust Tow Piece Design

The Diaphragm is welded to the Body to ensure separation of the filling fluid from the process medium.

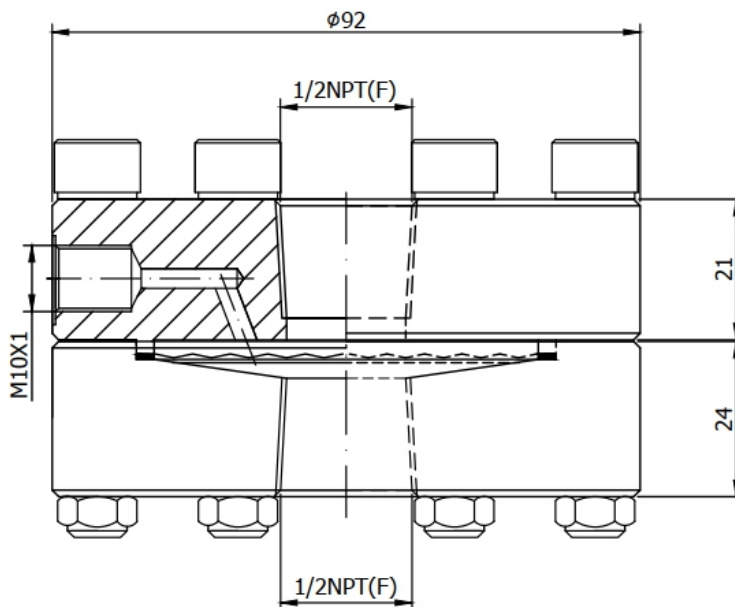
SPECIFICATIONS

- Range: -1 kg/cm² to 400 kg/cm² (Standard)
- Process Temperature: -40°C to 200°C or as per fill fluid
- Instrument Connection: 1/2"NPT (F)
- Process Connection: 1/2"NPT (M)
- Fill Liquid: Silicon Oil-DC 200
- Diaphragm: AISI 316L SS
- Top Chamber: AISI 304 SS
- Bottom Chamber: AISI 316 SS
- Nuts / Bolts: AISI 304 SS
- Sealing Gasket: PTFE max 250°/ Inconel silver plated for 400°C max



APPLICATIONS

Diaphragm seals are designed to Isolate the sensing element of Pressure Gauges and Pressure Switches from process fluids that they may be Corrosive, Viscous, Sedimentous and /or with high Temperature.



Example

HOW TO ORDER

BASIC MODEL

D-02

RANGE

S06 -1 to 0 kg/cm² & 0 to 70 kg/cm² (Standard) **S07** 100 kg/cm² to 400 kg/cm²

XXX

INSTRUMENT CONNECTION

VN 1/4"BSP(F) **VP** 3/8"BSP(F) **VL** 1/2"BSP(F) **VM** 1/2"NPT(F)(Standard) **VO** 1/4"NPT(F)

XX

TOP CHAMBER

XW AISI 304 SS (Standard) **YA** AISI SS316L SS **XY** AISI 316 SS

XX

DIAPHRAGM

UJ AISI 316L SS (Standard) **UL** HASTELLOY 'C' **UR** TITANIUM **UW** INCONEL 600
UM MONEL **UP** SILVER* **UQ** TANTALUM **UN** SUPER DUPLEX

XX

SEALING GASKET

VI PTFE (Standard) **YR** METAL **YQ** Inconel Silver Plate for Max 400°C (High Temp.Oil)

XX

BOTTOM CHAMBER

TK AISI 304 SS **TT** HASTELLOY 'C'
TM AISI 316 SS(Standard) **UD** TANTALUM
TL AISI 316L SS **TZ** PVC*
UH TITANIUM **UA** PVDF*
TX MONEL **TY** POLYPROPELENE*

MOC OF BOTTOM CHAMBER	PRESSURE V/S TEMPERATURE					
	20°C	40°C	60°C	80°C	100°C	120°C
PVDF	10 kg/cm ²	10 kg/cm ²	10 kg/cm ²	7 kg/cm ²	4 kg/cm ²	2 kg/cm ²
PP	10 kg/cm ²	10 kg/cm ²	6 kg/cm ²	4 kg/cm ²	1 kg/cm ²	NA
PVC	10 kg/cm ²	10 kg/cm ²	4 kg/cm ²	1 kg/cm ²	NA	NA

XX

PROCESS CONNECTION

WE 1/4"BSP(F) **WI** 1/4"NPT(F) **WY** 1/4"NPT(M) **WS** 1/4"BSP(M) **WR** M20X1.5(M)
WC 3/8"BSP(F) **WH** 1/2"NPT(F) **WA** 1/2"NPT(M)(Standard) **WT** 3/8"BSP(M)(Standard) **WP** M33X1.5(M)
WD 1/2"BSP(F) **WL** 3/4"NPT(F) **WK** 3/4"NPT(M) **WU** 1/2"BSP(M)(Standard)
WJ 3/4"BSP(F) **WF** 3/4"BSP(M)

XX

PROTECTION ON WETTED PARTS

VS PTFE LINING ON BOTTOM CHAMBER -2mm THICK (Max.Up to 150°C)
VV PTFE PROTECTION FOR DIAPHRAGM (Max.Up to 150°C max up to 100 bar)
VZ PTFE COATING ON DIAPHRAGM (Max.Up to 315°C)

XX

FILLING LIQUID

US FLUROLUBE 4.2 [-45 to 175°C] **UX** SILICON DC 200[-40 to 205°C]_(Standard) **VB** SYL THERM XLT [-100 to 260°C]
UT FLUROLUBE 6.3 [-40 to 235°C] **UY** SILICON DC 704 [10 to 337°C] **VC** HALOCARBON OIL*
UU FLUROLUBE FS-5 [-28 to 148°C] **UZ** SILICON DC 710 [7 to 371°C] **VD** LRS9 [-40 to 400°C]
UV FOOD GRADE OIL [-20 to 140°C] **VA** SYL THERM 800 [-40 to 315°C]

XX

REMOTE MOUNTING (With Capillary of Max. Up to 15 Mtrs.)

SPECIFY IN METERS (e.g 1.5=1.5 METERS 2.0=2 METERS)

3Mtr.

CAPILLARY

PE AISI 304 SS **PG** AISI 316 SS

XX

CAPILLARY COVERED WITH ARMOUR (Applicable with PE or PG if selected)

PF AISI 304 SS **PH** AISI 316 SS **PI** PVC

XX

OTHER OPTIONS

TB HELIUM LEAK TEST **TC** DRY SEAL ONLY WITHOUT INSTRUMENT **GH** MATERIAL TEST CERTIFICATE*

XX

Ordering Example: **D-02-XXX-XX-XX-XX-XX-XX-XX-XX-XX-3 Mtr-XX-XX-XX**