

## DIAPHRAGM SEALS



**ELITE INSTRUMENTS**

ISO 9001 COMPANY

PRESSURE GAUGE | THERMOMETER | DIAPHRAGM SEAL | ACCESSORIES

[www.elite-instrument.com](http://www.elite-instrument.com)  
[www.elite-instruments.com](http://www.elite-instruments.com)



the pressure equipment safety authority



NS : 40 / 50 / 63 / 80 /  
100 / 125 / 160 /  
200 / 250mm

Ranges  
available up  
to 60,000 psi

**WETTED PARTS -AVAILABLE  
SS 316L , HASTELLOY-C276 ,  
INCONEL 625 , MONEL 400**

- Bourdon Tube - AS PER NACE MR 0175
- Socket - AS PER NACE MR 0175
- Bourdon Tube - Seamless Tube
- Tig Welding - Approved by TUV
- Leak Testing - Helium Leak Tested
- Movement - Silicone Jelly Movement
- Dial - White Aluminum
- Window - Safety Glass
- Gasket - NBR
- Blow out Disc - Temperature Compensated
- IP Protection - IP 68

\*PLEASE REFER PRESSURE GAUGE CATALOGUE FOR DETAILS

# Table of contents

SR NO.	MODEL NO.	DESCRIPTION	PAGE NO.
1	D-01	DIRECT COUPLED TYPE	1
2	D-02	HEAVY DUTY DIRECT COUPLED TYPE	3
3	D-03	DIAPHRAGM SEAL MINI TYPE	5
4	D-04	DIAPHRAGM SEAL FLUSH DIAPHRAGM SANITARY TYPE	7
5	D-05	DIAPHRAGM SEAL SCREW FLUSHED TYPE	9
6	D-06	DIAPHRAGM SEAL HEAVY DUTY MINI SEAL	11
7	D-07	SANITARY DIAPHRAGM SEAL CLAMP TYPE	13
8	D-08	DIAPHRAGM SEAL FLANGE TYPE "I" SECTION	15
9	D-09	DIRECT FLANGED DIAPHRAGM SEAL FLUSHED TYPE	17
10	D-10	FLANGED DIAPHRAGM SEAL INSERT TYPE	19
11	D-11	DIAPHRAGM SEAL EXTENDED NECK TYPE	21
12	D-12	PULP DIAPHRAGM SEAL FLOATING RING TYPE	23
13		FLANGED CONNECTION CODE	25

## SPECIAL FEATURES

### Robust Tow Piece Design

The Diaphragm is welded to the Body to ensure separation of the filling fluid from the process medium.

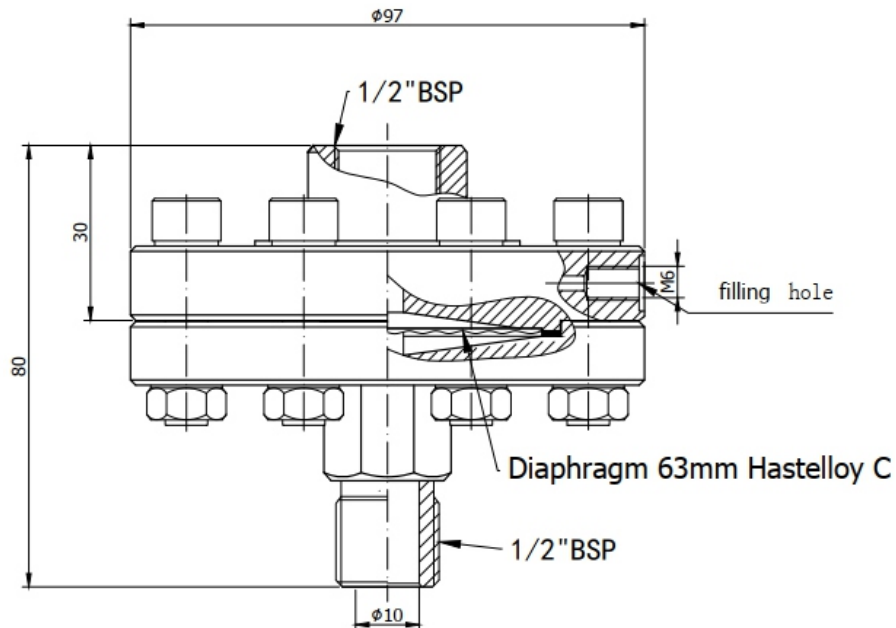
## SPECIFICATIONS

- Range: -1 kg/cm<sup>2</sup> to 400 kg/cm<sup>2</sup> (Standard)
- Process Temperature: -40°C to 200°C or as per fill fluid
- Instrument Connection: 1/2" BSP (F)
- Process Connection: 1/2" BSP (M)
- Fill Liquid: Silicon Oil-DC 200
- Diaphragm: AISI 316L SS
- Top Chamber: AISI 316 SS
- Bottom Chamber: AISI 316 SS
- Nuts / Bolts: AISI 304 SS
- Sealing Gasket: PTFE max 250°/ Inconel silver plated for 400°C max



## APPLICATIONS

Diaphragm seals are designed to Isolate the sensing element of Pressure Gauges and Pressure Switches from process fluids that they may be Corrosive, Viscous, Sedimentous and /or with high Temperature.





Example

## HOW TO ORDER

### BASIC MODEL

D-01

### RANGE

S06 -1 to 0 kg/cm<sup>2</sup> & 0 to 70 kg/cm<sup>2</sup> (Standard)

S07 100 kg/cm<sup>2</sup> to 400 kg/cm<sup>2</sup>

XXX

### INSTRUMENT CONNECTION

VN 1/4"BSP(F) VP 3/8"BSP(F) VL 1/2"BSP(F) VM 1/2"NPT(F)(Standard) VO 1/4"NPT(F)

XX

### TOP CHAMBER

XW AISI 304 SS (Standard)

YA AISI SS316L SS

XY AISI 316 SS

XX

### DIAPHRAGM

UJ AISI 316L SS (Standard)

UL HASTELLOY 'C'

UR TITANIUM

UW INCONEL 600

XX

UM MONEL

UP SILVER\*

UQ TANTALUM

UN SUPER DUPLEX

### SEALING GASKET

VI PTFE (Standard)

YR METAL

YQ Inconel Silver Plate for Max 400°C (High Temp.Oil)

XX

### BOTTOM CHAMBER

TK AISI 304 SS

TT HASTELLOY 'C'

MOC OF BOTTOM CHAMBER	PRESSURE V/S TEMPERATURE					
	20°C	40°C	60°C	80°C	100°C	120°C
PVDF	10 kg/cm <sup>2</sup>	10 kg/cm <sup>2</sup>	10 kg/cm <sup>2</sup>	7 kg/cm <sup>2</sup>	4 kg/cm <sup>2</sup>	2 kg/cm <sup>2</sup>
PP	10 kg/cm <sup>2</sup>	10 kg/cm <sup>2</sup>	6 kg/cm <sup>2</sup>	4 kg/cm <sup>2</sup>	1 kg/cm <sup>2</sup>	NA
PVC	10 kg/cm <sup>2</sup>	10 kg/cm <sup>2</sup>	4 kg/cm <sup>2</sup>	1 kg/cm <sup>2</sup>	NA	NA

XX

TM AISI 316 SS(Standard)

UD TANTALUM

TL AISI 316L SS

TZ PVC\*

UH TITANIUM

UA PVDF\*

TX MONEL

TY POLYPROPELENE\*

### PROCESS CONNECTION

WE 1/4"BSP(F)

WI 1/4"NPT(F)

WY 1/4"NPT(M)

WS 1/4"BSP(M)

WR M20X1.5(M)

XX

WC 3/8"BSP(F)

WH 1/2"NPT(F)

WA 1/2"NPT(M)(Standard)

WT 3/8"BSP(M)(Standard)

WP M33X1.5(M)

WD 1/2"BSP(F)

WL 3/4"NPT(F)

WK 3/4"NPT(M)

WU 1/2"BSP(M)(Standard)

WJ 3/4"BSP(F)

WF 3/4"BSP(M)

### PROTECTION ON WETTED PARTS

VS PTFE LINING ON BOTTOM CHAMBER -2mm THICK (Max.Up to 150°C)

VV PTFE PROTECTION FOR DIAPHRAGM (Max.Up to 150°C max up to 100 bar)

VZ PTFE COATING ON DIAPHRAGM (Max.Up to 315°C)

XX

### FILLING LIQUID

US FLUROLUBE 4.2 [-45 to 175°C]

UX SILICON DC 200[-40 to 205°C](Standard)

VB SYLTHERM XLT [-100 to 260°C]

XX

UT FLUROLUBE 6.3 [-40 to 235°C]

UY SILICON DC 704 [10 to 337°C]

VC HALOCARBON OIL\*

UU FLUROLUBE FS-5 [-28 to 148°C]

UZ SILICON DC 710 [7 to 371°C]

VD LRS9 [-40 to 400°C]

UV FOOD GRADE OIL [-20 to 140°C]

VA SYLTHERM 800 [-40 to 315°C]

### REMOTE MOUNTING (With Capillary of Max. Up to 15 Mtrs.)

SPECIFY IN METERS (e.g 1.5=1.5 METERS 2.0=2 METERS)

3Mtr.

### CAPILLARY

PE AISI 304 SS

PG AISI 316 SS

XX

### CAPILLARY COVERED WITH ARMOUR

PF AISI 304 SS

PH AISI 316 SS

PI PVC

XX

### OTHER OPTIONS

TB HELIUM LEAK TEST

TC DRY SEAL ONLY WITHOUT INSTRUMENT

GH MATERIAL TEST CERTIFICATE\*

XX

Ordering Example: **D-01-XXX-XX-XX-XX-XX-XX-XX-XX-XX-3 Mtr-XX-XX-XX**

## SPECIAL FEATURES

### Robust Tow Piece Design

The Diaphragm is welded to the Body to ensure separation of the filling fluid from the process medium.

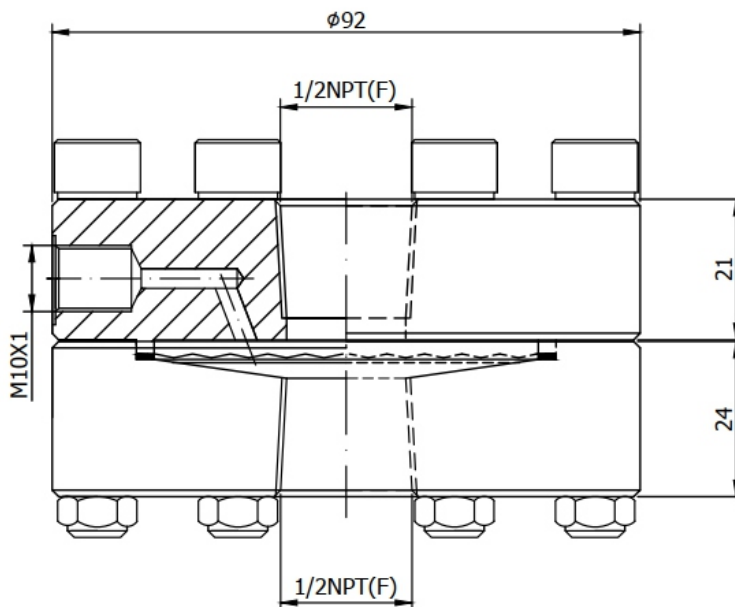
## SPECIFICATIONS

- Range: -1 kg/cm<sup>2</sup> to 400 kg/cm<sup>2</sup> (Standard)
- Process Temperature: -40°C to 200°C or as per fill fluid
- Instrument Connection: 1/2"NPT (F)
- Process Connection: 1/2"NPT (M)
- Fill Liquid: Silicon Oil-DC 200
- Diaphragm: AISI 316L SS
- Top Chamber: AISI 304 SS
- Bottom Chamber: AISI 316 SS
- Nuts / Bolts: AISI 304 SS
- Sealing Gasket: PTFE max 250°/ Inconel silver plated for 400°C max



## APPLICATIONS

Diaphragm seals are designed to Isolate the sensing element of Pressure Gauges and Pressure Switches from process fluids that they may be Corrosive, Viscous, Sedimentous and /or with high Temperature.



Example

## HOW TO ORDER

### BASIC MODEL

D-02

### RANGE

**S06** -1 to 0 kg/cm<sup>2</sup> & 0 to 70 kg/cm<sup>2</sup> (Standard)      **S07** 100 kg/cm<sup>2</sup> to 400 kg/cm<sup>2</sup>

XXX

### INSTRUMENT CONNECTION

**VN** 1/4"BSP(F)   **VP** 3/8"BSP(F)   **VL** 1/2"BSP(F)   **VM** 1/2"NPT(F)(Standard)   **VO** 1/4"NPT(F)

XX

### TOP CHAMBER

**XW** AISI 304 SS (Standard)   **YA** AISI SS316L SS   **XY** AISI 316 SS

XX

### DIAPHRAGM

**UJ** AISI 316L SS (Standard)   **UL** HASTELLOY 'C'   **UR** TITANIUM   **UW** INCONEL 600  
**UM** MONEL   **UP** SILVER\*   **UQ** TANTALUM   **UN** SUPER DUPLEX

XX

### SEALING GASKET

**VI** PTFE (Standard)   **YR** METAL   **YQ** Inconel Silver Plate for Max 400°C (High Temp.Oil)

XX

### BOTTOM CHAMBER

**TK** AISI 304 SS   **TT** HASTELLOY 'C'  
**TM** AISI 316 SS(Standard)   **UD** TANTALUM  
**TL** AISI 316L SS   **TZ** PVC\*  
**UH** TITANIUM   **UA** PVDF\*  
**TX** MONEL   **TY** POLYPROPELENE\*

MOC OF BOTTOM CHAMBER	PRESSURE V/S TEMPERATURE					
	20°C	40°C	60°C	80°C	100°C	120°C
PVDF	10 kg/cm <sup>2</sup>	10 kg/cm <sup>2</sup>	10 kg/cm <sup>2</sup>	7 kg/cm <sup>2</sup>	4 kg/cm <sup>2</sup>	2 kg/cm <sup>2</sup>
PP	10 kg/cm <sup>2</sup>	10 kg/cm <sup>2</sup>	6 kg/cm <sup>2</sup>	4 kg/cm <sup>2</sup>	1 kg/cm <sup>2</sup>	NA
PVC	10 kg/cm <sup>2</sup>	10 kg/cm <sup>2</sup>	4 kg/cm <sup>2</sup>	1 kg/cm <sup>2</sup>	NA	NA

XX

### PROCESS CONNECTION

**WE** 1/4"BSP(F)   **WI** 1/4"NPT(F)   **WY** 1/4"NPT(M)   **WS** 1/4"BSP(M)   **WR** M20X1.5(M)  
**WC** 3/8"BSP(F)   **WH** 1/2"NPT(F)   **WA** 1/2"NPT(M)(Standard)   **WT** 3/8"BSP(M)(Standard)   **WP** M33X1.5(M)  
**WD** 1/2"BSP(F)   **WL** 3/4"NPT(F)   **WK** 3/4"NPT(M)   **WU** 1/2"BSP(M)(Standard)  
**WJ** 3/4"BSP(F)   **WF** 3/4"BSP(M)

XX

### PROTECTION ON WETTED PARTS

**VS** PTFE LINING ON BOTTOM CHAMBER -2mm THICK (Max.Up to 150°C)  
**VV** PTFE PROTECTION FOR DIAPHRAGM (Max.Up to 150°C max up to 100 bar)  
**VZ** PTFE COATING ON DIAPHRAGM (Max.Up to 315°C)

XX

### FILLING LIQUID

**US** FLUROLUBE 4.2 [-45 to 175°C]   **UX** SILICON DC 200[-40 to 205°C]<sub>(Standard)</sub>   **VB** SYL THERM XLT [-100 to 260°C]  
**UT** FLUROLUBE 6.3 [-40 to 235°C]   **UY** SILICON DC 704 [10 to 337°C]   **VC** HALOCARBON OIL\*  
**UU** FLUROLUBE FS-5 [-28 to 148°C]   **UZ** SILICON DC 710 [7 to 371°C]   **VD** LRS9 [-40 to 400°C]  
**UV** FOOD GRADE OIL [-20 to 140°C]   **VA** SYL THERM 800 [-40 to 315°C]

XX

### REMOTE MOUNTING (With Capillary of Max. Up to 15 Mtrs.)

SPECIFY IN METERS (e.g 1.5=1.5 METERS 2.0=2 METERS)

3Mtr.

### CAPILLARY

**PE** AISI 304 SS   **PG** AISI 316 SS

XX

### CAPILLARY COVERED WITH ARMOUR (Applicable with PE or PG if selected)

**PF** AISI 304 SS   **PH** AISI 316 SS   **PI** PVC

XX

### OTHER OPTIONS

**TB** HELIUM LEAK TEST   **TC** DRY SEAL ONLY WITHOUT INSTRUMENT   **GH** MATERIAL TEST CERTIFICATE\*

XX

Ordering Example: **D-02-XXX-XX-XX-XX-XX-XX-XX-XX-XX-3 Mtr-XX-XX-XX**

## SPECIAL FEATURES

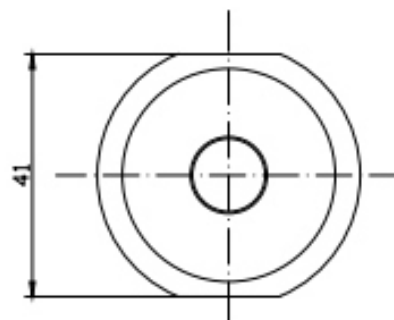
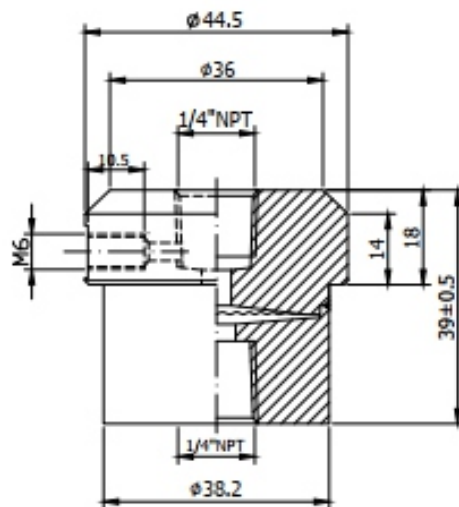
Compact Design  
 Low Cost Version  
 The Diaphragm is welded to the Body  
 To ensure separation of the filling fluid  
 from the process medium.

## SPECIFICATIONS

Process Temperature: -40°C to 200°C or as per fill fluid  
 Instrument Connection: 1/4"NPT (F)  
 Process Connection: 1/4"NPT (M)  
 Fill Liquid: Silicon Oil-DC 200  
 Diaphragm: AISI 316L SS  
 Body: AISI316 SS

## APPLICATIONS

Diaphragm seals are designed to Isolate the sensing element of Pressure Gauges and Pressure Switches from process fluids that they may be Corrosive,Viscous, Sedimentous and /or with high Temperature.



## HOW TO ORDER

### BASIC MODEL

D-03

### INSTRUMENT CONNECTION

**VN** 1/4"BSP(F)     **VO** 1/4"NPT(F)

XX

### BODY

**TK** AISI 304 SS     **TT** HASTELLOTY 'C'  
**TM** AISI 316 SS(Standard)     **UD** TANTALUM  
**CM** AISI 316L SS     **TX** MONEL  
**UN** SUPER DUPLEX     **TD** DUPLEX  
**TE** UNS S31254     **UW** INCONEL 625  
**TH** 254 SMO

MOC OF BOTTOM CHAMBER	PRESSURE V/S TEMPERATURE					
	20°C	40°C	60°C	80°C	100°C	120°C
PVDF	10 kg/cm <sup>2</sup>	10 kg/cm <sup>2</sup>	10 kg/cm <sup>2</sup>	7 kg/cm <sup>2</sup>	4 kg/cm <sup>2</sup>	2 kg/cm <sup>2</sup>
PP	10 kg/cm <sup>2</sup>	10 kg/cm <sup>2</sup>	6 kg/cm <sup>2</sup>	4 kg/cm <sup>2</sup>	1 kg/cm <sup>2</sup>	NA
PVC	10 kg/cm <sup>2</sup>	10 kg/cm <sup>2</sup>	4 kg/cm <sup>2</sup>	1 kg/cm <sup>2</sup>	NA	NA

XX

### DIAPHRAGM

**UJ** AISI 316L SS (Standard)     **UL** HASTELLOY 'C276'     **UR** TITANIUM     **UW** INCONEL 600  
**UM** MONEL     **UP** SILVER\*     **UQ** TANTALUM     **UN** SUPER DUPLEX

XX

### PROCESS CONNECTION

**WE** 1/4"BSP(F)     **WI** 1/4"NPT(F)     **WY** 1/4"NPT(M)     **WS** 1/4"BSP(M)     **WR** M20X1.5(M)  
**WC** 3/8"BSP(F)     **WH** 1/2"NPT(F)     **WA** 1/2"NPT(M)(Standard)     **WT** 3/8"BSP(M)(Standard)     **WP** M33X1.5(M)  
**WD** 1/2"BSP(F)     **WL** 3/4"NPT(F)     **WK** 3/4"NPT(M)     **WU** 1/2"BSP(M)(Standard)  
**WJ** 3/4"BSP(F)     **WF** 3/4"BSP(M)

XX

### FILLING LIQUID

**US** FLUROLUBE 4.2 [-45 to 175°C]     **UX** SILICON DC 200[-40 to 205°C]<sub>(Standard)</sub>     **VB** SYLTHERM XLT [-100 to 260°C]  
**UT** FLUROLUBE 6.3 [-40 to 235°C]     **UY** SILICON DC 704 [10 to 337°C]     **VC** HALOCARBON OIL\*  
**UU** FLUROLUBE FS-5 [-28 to 148°C]     **UZ** SILICON DC 710 [7 to 371°C]  
**UV** FOOD GRADE OIL [-20 to 140°C]     **VA** SYLTHERM 800 [-40 to 315°C]

XX

### OTHER OPTIONS

**TB** HELIUM LEAK TEST     **TC** DRY SEAL ONLY WITHOUT INSTRUMENT     **GH** MATERIAL TEST CERTIFICATE\*

XX

**Ordering Example: D-03-XX-XX-XX-XX-XX-XXXX**



## SPECIAL FEATURES

All SS316L Construction  
Quick Connect and Disconnect  
Matching DIN , SMS , RJT Standard.

## SPECIFICATIONS

Range: Refer range table with nominal sizes.  
Process Temperature: -20°C to 140°C or as per fill fluid  
Instrument Connection: 1/2"NPT (F)  
Process Connection: As per DIN 11851, SMS, RJT, IDF  
Fill Liquid: Silicon Oil-DC 200  
Mounting: Direct (Without Capillary)  
Diaphragm: AISI 316L SS  
Unit Nut: AISI 316 SS  
Body: AISI 316 SS  
Fill Fluid: Food Grade Oil

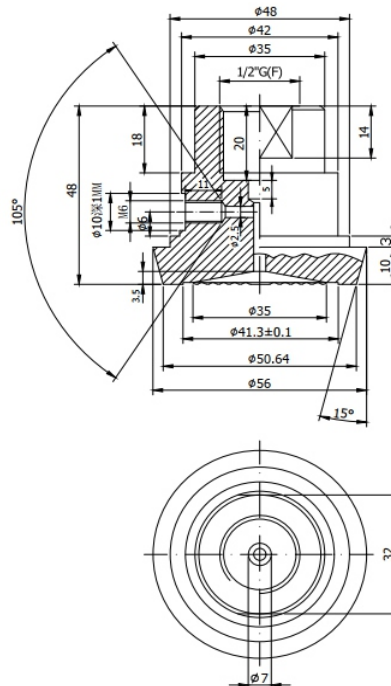


## APPLICATIONS

Diaphragm seals are provided in the Instruments like Pressure Guages ,Switches, Transmitters in order to Isolate the sensing element from the main service due to it's corrosive ,Viscous and Sedimented nature and avoid clogging and solidification.

This seals are specially designed for applications where high purity in the process is essential Typically in Food, Beverages, Dairy and Pharmaceutical Industries.

### DN 40



Example

## HOW TO ORDER

### BASIC MODEL

D-04

### FLOATING RING (FEMALE): SIZE & TYPE

<b>KH</b>	(25*, 32, 40, 50 mm)	DIN	<b>KJ</b>	(1 1/2", 2")	RJT	XX(1 1/2")
<b>KI</b>	(1", 1 1/2", 2")	SMS	<b>KK</b>	(1", 1 1/2", 2")	IDF / ISS	

### PROCESS CONNECTION

<b>M</b>	MALE	<b>F</b>	FEMALE	XX
----------	------	----------	--------	----

### INSTRUMENT CONNECTION

<b>VN</b>	1/4"BSP(F)	<b>VO</b>	1/4"NPT(F)	XX
<b>VL</b>	1/2"BSP(F)	<b>VM</b>	1/2"NPT(F)(Standard)	

### DIAPHRAGM

<b>UJ</b>	AISI 316L SS (Standard)	XX
-----------	-------------------------	----

### FILLING FLUID

<b>UV</b>	FOOD GRADE OIL [-20 TO 140°C/ -4 TO 284°F] (Standard)	XX
-----------	---	----

### BODY

<b>CL</b>	AISI 316 SS (Standard)	<b>CM</b>	AISI 316L SS	XX
-----------	------------------------	-----------	--------------	----

### BOTTOM MATING PART

<b>KL</b>	(25*, 32, 40, 50 mm)	DIN	<b>KN</b>	(1 1/2", 2")	RJT	XX(1 1/2")
<b>KM</b>	(1", 1 1/2", 2")	SMS	<b>KO</b>	(1", 1 1/2", 2")	IDF / ISS	

### OTHER OPTIONS

<b>TB</b>	HELIUM LEAK TEST	<b>TC</b>	DRY SEAL ONLY WITHOUT INSTRUMENT	<b>GH</b>	MATERIAL TEST CERTIFICATE*	XX
-----------	------------------	-----------	----------------------------------	-----------	----------------------------	----

**Ordering Example: D-04-XX (1 1/2")-XX-XX-XX-XX-XX-XX (1 1/2")-XX**

## SPECIAL FEATURES

All SS 316 Construction  
One Piece Construction  
Flush Diaphragm.

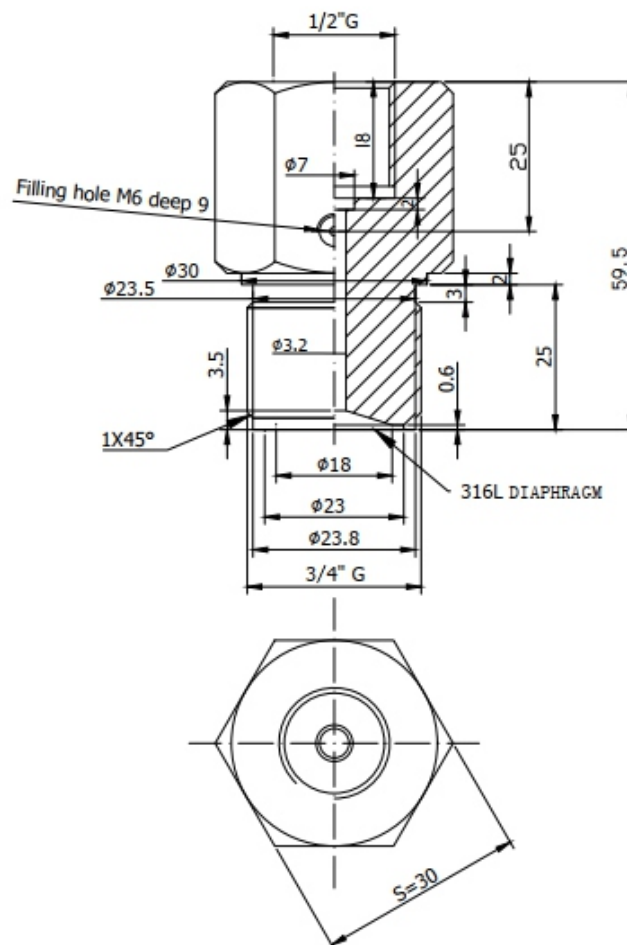
## SPECIFICATIONS

Range: Refer below table  
Process Temperature: -40°C to 200°C or as per fill fluid  
Instrument Connection: 1/4" BSP (F)  
Process Connection: 3/4" BSP (M)  
Mounting: Direct (Without Capillary)  
Diaphragm: AISI 316L SS  
Body: AISI 316 SS  
Fill Fluid: Silicon Oil DC 200



## APPLICATIONS

Diaphragm seals are provided in the Instruments like Pressure Gauges, Switches, Transmitters in order to Isolate the sensing element from the main service due to its corrosive, Viscous and Sedimented nature and avoid clogging and solidification.



## HOW TO ORDER

### BASIC MODEL

### BODY

**CL** AISI 316 SS (Standard)                      **CM** AISI 316L SS

### DIAPHRAGM

**UJ** AISI 316L SS (Standard)

### INSTRUMENT CONNECTION

**VN** 1/4"BSP(F)(Standard)    **VP** 3/8"BSP(F)                      **VO** 1/4"NPT(F)  
**VL** 1/2"BSP(F)                      **VM** 1/2"NPT(F)

### PROCESS CONNECTION

**WU** 1/2"BSP(M)    **WW** 1"BSP(M)    **WX** 1 1/2"BSP(M)    **WB** 2"BSP(M)    **WF** 3/4"BSP(Standard)  
**WA** 1/2"NPT(M)    **XC** 1"NPT(M)    **XD** 1 1/2"NPT(M)    **XE** 2"NPT(M)    **XB** 3/4"NPT

### FILLING FLUID

**US** FLUROLUBE 4.2 [-45 to 175°C]                      **UY** SILICON DC 704 [10 to 337°C]  
**UT** FLUROLUBE 6.3 [-45 to 235°C]                      **UZ** SILICON DC 710 [7 to 371°C]  
**UU** FLUROLUBE FS-5 [-28 to 148°C]                      **VA** SYLTHERM 800 [-40 to 315°C]  
**UV** FOOD GRADE OIL [-20 to 140°C]                      **VB** SYLTHERM XLT [-100 to 260°C]  
**UX** SILICON DC 200 [-40 to 205°C] (Standard)                      **VC** HALOCARBON OIL\*

### FILLING FLUID

**TB** HELIUM LEAK TEST    **TC** DRY SEAL ONLY WITHOUT INSTRUMENT    **GH** MATERIAL TEST CERTIFICATE\*

Example

D-05

XX

XX

XX

XX

XX

XX

**Ordering Example: D-05-XX-XX-XX-XX-XX-XX**

## SPECIAL FEATURES

All SS 316 Construction  
 Light Weight  
 Economical  
 Ideal choice for High Pressure  
 The Diaphragm is welded to the body  
 to ensure separation of the filling  
 fluid from the process medium.

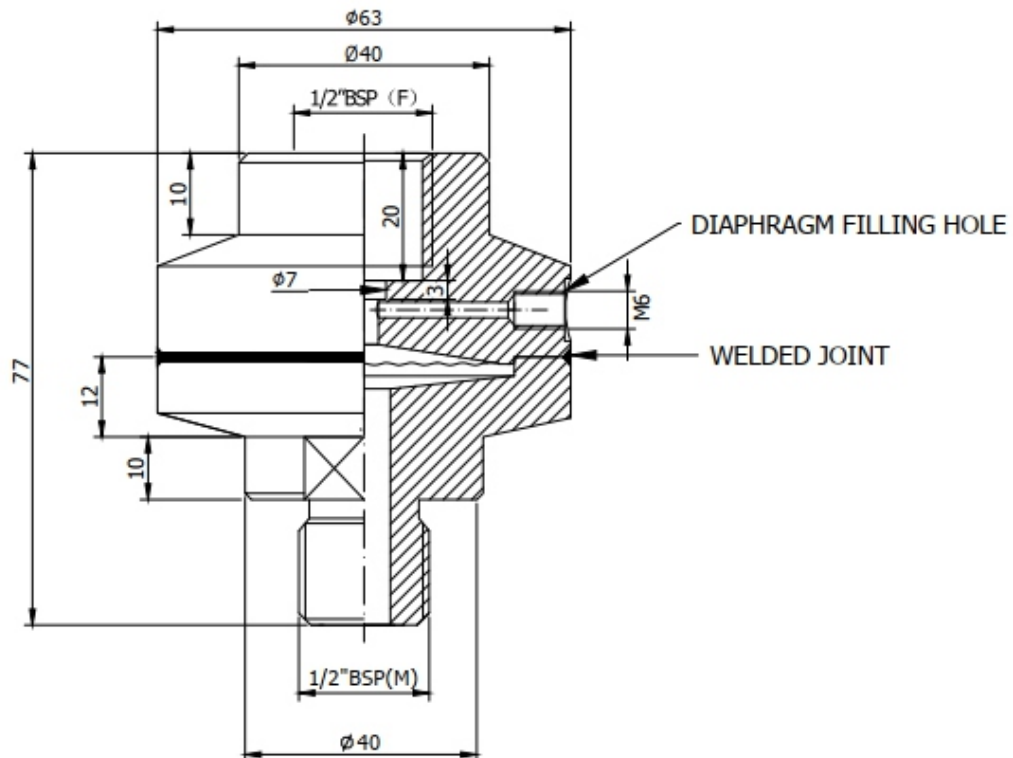
## SPECIFICATIONS

Range: -1 kg/cm<sup>2</sup> to 400 kg/cm<sup>2</sup>  
 Process Temperature: -40°C to 200°C or as per fill fluid  
 Instrument Connection: 1/2" BSP (F)  
 Process Connection: 1/2" BSP (M)  
 Fill Fluid: Silicon Oil-DC 200  
 Mounting: Direct (Without Capillary)  
 Diaphragm: AISI 316L SS  
 Body: AISI 316 SS



## APPLICATIONS

Diaphragm seals are designed to Isolate the sensing element of Pressure Gauges and Pressure Switches from process fluids that they may be Corrosive, Viscous, Sedimentous and/or with high temperature.





Example

## HOW TO ORDER

### BASIC MODEL RANGE

**S11** -1 kg/cm<sup>2</sup> to 400 kg/cm<sup>2</sup>      **S12** 400 kg/cm<sup>2</sup> to 700 kg/cm<sup>2</sup>

### INSTRUMENT CONNECTION

**VN** 1/4"BSP(F)      **VP** 3/8"BSP(F)      **VO** 1/4"NPT(F)  
**VL** 1/2"BSP(F)(Standard)      **VM** 1/2"NPT(F)

### BODY

**TK** AISI 304 SS      **TT** HASTELLOTY 'C'  
**TM** AISI 316 SS(Standard)      **UD** TANTALUM  
**CM** AISI 316L SS      **TX** MONEL  
**UN** SUPER DUPLEX      **TD** DUPLEX  
**TE** UNS S31254      **UW** INCONEL 625  
**TH** 254 SMO

MOC OF BOTTOM CHAMBER	PRESSURE V/S TEMPERATURE					
	20°C	40°C	60°C	80°C	100°C	120°C
PVDF	10 kg/cm <sup>2</sup>	10 kg/cm <sup>2</sup>	10 kg/cm <sup>2</sup>	7 kg/cm <sup>2</sup>	4 kg/cm <sup>2</sup>	2 kg/cm <sup>2</sup>
PP	10 kg/cm <sup>2</sup>	10 kg/cm <sup>2</sup>	6 kg/cm <sup>2</sup>	4 kg/cm <sup>2</sup>	1 kg/cm <sup>2</sup>	NA
PVC	10 kg/cm <sup>2</sup>	10 kg/cm <sup>2</sup>	4 kg/cm <sup>2</sup>	1 kg/cm <sup>2</sup>	NA	NA

### DIAPHRAGM

**UJ** AISI 316L SS (Standard)      **UL** HASTELLOY 'C276'  
**UM** MONEL      **UP** SILVER\*      **UR** TITANIUM      **UW** INCONEL 600  
**UN** SUPER DUPLEX

### PROCESS CONNECTION

**WE** 1/4"BSP(F)(Standard)\*      **WI** 1/4"NPT(F)      **WY** 1/4"NPT(M)      **WS** 1/4"BSP(M)  
**WC** 3/8"BSP(F)      **WH** 1/2"NPT(F)      **WA** 1/2"NPT(M)      **WT** 3/8"BSP(M)  
**WD** 1/2"BSP(F)      **WL** 3/4"NPT(F)      **WK** 3/4"NPT(M)      **WF** 3/4"BSP(M)  
**WJ** 3/4"BSP(F)      **WU** 1/2"BSP(M)(Standard)

### FILLING FLUID

**US** FLUROLUBE 4.2 [-45 to 175°C]      **UY** SILICON DC 704 [10 to 337°C]  
**UT** FLUROLUBE 6.3 [-45 to 235°C]      **UZ** SILICON DC 710 [7 to 371°C]  
**UU** FLUROLUBE FS-5 [-28 to 148°C]      **VA** SYLTHERM 800 [-40 to 315°C]  
**UV** FOOD GRADE OIL [-20 to 140°C]      **VB** SYLTHERM XLT [-100 to 260°C]  
**UX** SILICON DC 200 [-40 to 205°C] (Standard)      **VC** HALOCARBON OIL\*  
**VD** LRS9 [-40 to 400°C]

### REMOTE MOUNTING

SPECIFY IN METERS (e.g 1.5= 1.5 METERS 2.0 = 2 METERS)

### CAPILLARY

**PE** AISI 304 SS      **PG** AISI 316 SS

### CAPILLARY COVERED WITH ARMOUR

**PF** AISI 304 SS      **PH** AISI 316 SS      **PI** PVC

### OTHER OPTIONS

**TB** HELIUM LEAK TEST      **TC** DRY SEAL ONLY WITHOUT INSTRUMENT      **GH** MATERIAL TEST CERTIFICATE\*

**Ordering Example: D-06-XX-XX-XX-XX-XX-XX-2 Mtr-XX-XX-XX**

## SPECIAL FEATURES

Quick Connect and Disconnect  
For Hygiene Applications  
Easy to Clean

## SPECIFICATIONS

Range: -1 to 0 kg/cm<sup>2</sup> & 0 to 40kg/cm<sup>2</sup> (Standard)  
 Process Temperature: -20°C to 140°C or as per fill fluid  
 Instrument Connection: S16= 1/2"BSP(F)  
                                   S17= 1/4"BSP(F)  
 Process Connection: 1 1/2" Sanitary Seal (Without Clamp & Gasket)  
 Mounting: Direct (Without Capillary)  
 Diaphragm: AISI 316L SS  
 Body: AISI 316 SS  
 Fill Fluid: Food Grade Oil

## APPLICATIONS

Diaphragm seals are provided in the Instrument like Pressure Gauges ,Switches, Transmitters in order to isolate the sensing element from the main service due to It's Corrosive ,Viscous and Sedimented nature and to avoid clogging and solidification. These seals are used in applications where purity in process is essential -Typically in Food,Dairy Beverages and Pharmaceutical Industries.



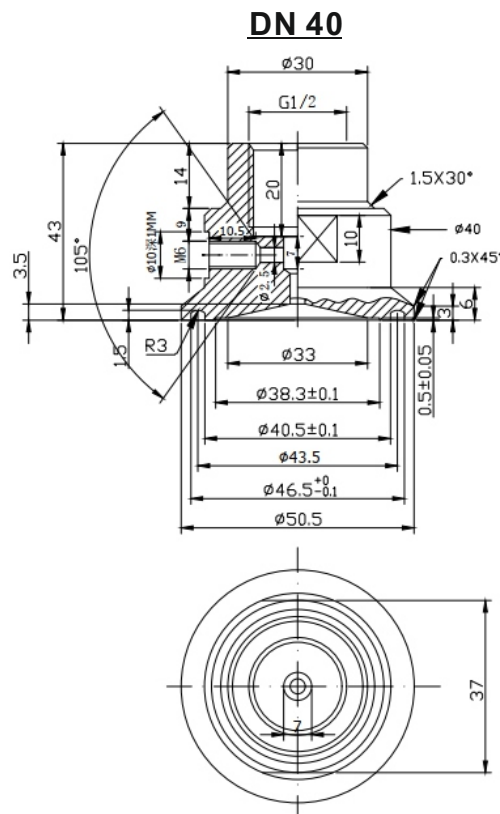
SANITARY SEAL



TRICLOVER CLAMP



BOTTOM MATING PART



			Example
<b>HOW TO ORDER</b>			D-07
<b>BASIC MODEL</b>			
<b>RANGE</b>			
<b>S16</b> -1 to 0 & 0 to 40kg/cm2 (Standard)			XXX
<b>SANITARY SEAL</b>			
<b>YN</b> 1 1/2" Sanitary Seal in AISI 316 SS (Standard)			XX
<b>YO</b> 2" Sanitary Seal in AISI 316 SS			
<b>YP</b> 2 1/2" Sanitary Seal in AISI 316 SS			
<b>INSTRUMENT CONNECTION</b>			
<b>VO</b> 1/4"NPT(F)	<b>VN</b> 1/4"BSP(F)(Standard)*	<b>VP</b> 3/8"BSP(F)	XX
<b>VM</b> 1/2"NPT(F)	<b>VL</b> 1/2"BSP(F)(Standard)		
<b>BODY</b>			
<b>CL</b> AISI 316 SS (Standard)	<b>CM</b> AISI 316L SS		XX
<b>BOTTOM MATING PARTS</b>			
<b>KB</b> 1 1/2" Sanitary Seal in AISI 316 SS			XX
<b>KC</b> 2" Sanitary Seal in AISI 316 SS			
<b>KD</b> 2 1/2" Sanitary Seal in AISI 316 SS			
<b>END CONNECTION OF BOTTOM MATING PART</b>			
<b>3BM</b> 3/8"BSP(M)	<b>4NM</b> 1/2"NPT(M)*		XX
<b>4BM</b> 1/2"BSP(M)	<b>4ZB</b> 1/2"PIPE(M)(PlainEnd)		
<b>DIAPHRAGM</b>			
<b>UJ</b> AISI 316L (Standard)			XX
<b>FILLING FLUID</b>			
<b>UV</b> FOOD GRADE OIL [-20 to 140°C/ -4 to 284°F] (Standard)			XX
<b>CLAMP</b>			
<b>ZO</b> 1 1/2" CLAMP AISI 304 SS	<b>ZQ</b> 2 1/2" CLAMP AISI 304 SS		XX
<b>ZP</b> 2" CLAMP AISI 304 SS			
<b>GASKET (SEALING RING)</b>			
<b>FX</b> 1 1/2" SILICON GASKET	<b>FZ</b> 2 1/2" SILICON GASKET		XX
<b>FY</b> 2" SILICON GASKET			
<b>OTHER OPTIONS</b>			
<b>TB</b> HELIUM LEAK TEST	<b>TC</b> DRY SEAL ONLY WITHOUT INSTRUMENT	<b>GH</b> MATERIAL TEST CERTIFICATE*	XX

**Ordering Example: D-07-XXX-XX-XX-XX-XX-XX-XX-XX-XX-XX-XX**

## SPECIAL FEATURES

Continuous Duty  
"I" Section Extension to Facilitate smaller flange sizes suitable for Anti Corrosive Protection.

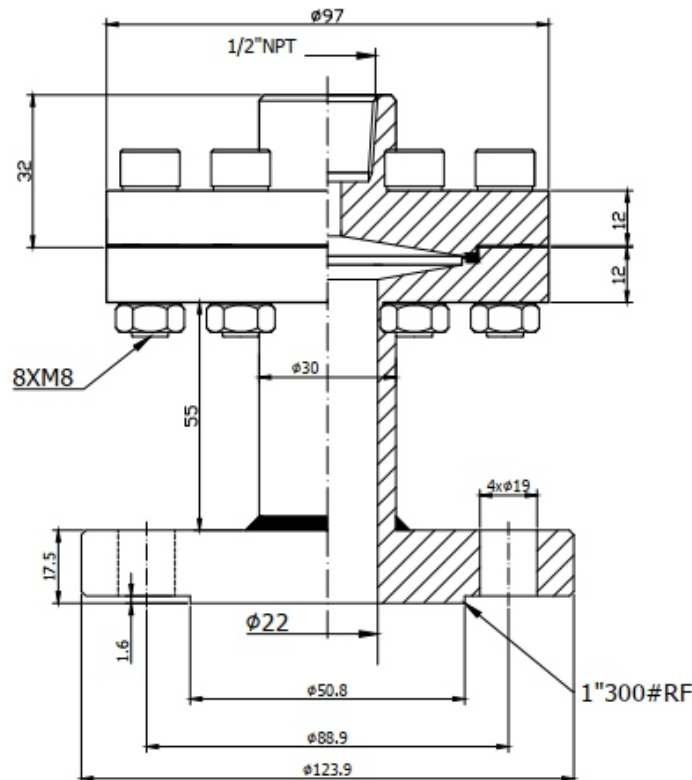
## SPECIFICATIONS

Range: -1 kg/cm<sup>2</sup> to 100 kg/cm<sup>2</sup>  
 Process Temperature: -40°C to 200°C without PTFE Lined  
 Instrument Connection: 1/2"NPT(F)  
 Process Connection: Flange (as per DIN/BS/ANSI/JIS) 125-250 AARH  
 Fill Fluid: Silicon Oil-DC 200  
 Diaphragm: AISI 316L SS  
 Top Chamber: AISI 316 SS  
 Bottom Chamber("I"Section): AISI 316 SS Flange (As per DIN/BS/ANSI/JIS)  
 Nut,Bolts: AISI 304 SS  
 Sealing Gasket: PTFE



## APPLICATIONS

Diaphragm seals are provided in the Instrument like Pressure Gauges ,Switches, Transmitters in order to isolate the sensing element from the main service due to It's Corrosive ,Viscous and Sedimented nature and to avoid clogging and solidification. This can be widely used with anti corrosive treatment/ protection & various flanged sizes.



Example

## HOW TO ORDER

### BASIC MODEL

#### RANGE

**S21** -1 to 0 kg/cm<sup>2</sup> & 0 to 100 kg/cm<sup>2</sup>      **S22** 100 kg/cm<sup>2</sup> to 250 kg/cm<sup>2</sup>

### INSTRUMENT CONNECTION

**VP** 3/8"BSP(F)    **VL** 1/2"BSP(F)    **VM** 1/2"NPT(F)(Standard)

### TOP CHAMBER

**XW** AISI 304 SS (Standard)    **YA** AISI SS316L SS    **XY** AISI 316 SS    **YC** CARBON STEEL

### DIAPHRAGM

**UJ** AISI 316L SS (Standard)    **UL** HASTELLOY 'C276'    **UR** TITANIUM    **UW** INCONEL 600  
**UM** MONEL    **UP** SILVER\*    **UQ** TANTALUM    **UN** SUPER DUPLEX

### SEALING GASKET

**VI** PTFE (Standard)    **YR** METAL    **YQ** Inconel Silver Plate for Max 400°C (High Temp.Oil)

### BOTTOM CHAMBER ( I SECTION)

**TK** AISI 304 SS    **TT** HASTELLOY 'C'  
**TM** AISI 316 SS(Standard)    **TN** CARBON STEEL  
**TL** AISI 316L SS    **TZ** PVC\*  
**UH** TITANIUM    **UA** PVDF\*  
**TX** MONEL    **TY** POLYPROPELENE\*

MOC OF BOTTOM CHAMBER	PRESSURE V/S TEMPERATURE					
	20°C	40°C	60°C	80°C	100°C	120°C
PVDF	10 kg/cm <sup>2</sup>	10 kg/cm <sup>2</sup>	10 kg/cm <sup>2</sup>	7 kg/cm <sup>2</sup>	4 kg/cm <sup>2</sup>	2 kg/cm <sup>2</sup>
PP	10 kg/cm <sup>2</sup>	10 kg/cm <sup>2</sup>	6 kg/cm <sup>2</sup>	4 kg/cm <sup>2</sup>	1 kg/cm <sup>2</sup>	NA
PVC	10 kg/cm <sup>2</sup>	10 kg/cm <sup>2</sup>	4 kg/cm <sup>2</sup>	1 kg/cm <sup>2</sup>	NA	NA

### PROCESS CONNECTION

As per DIN / BS / ANSI / JIS (Select Code from Flange Table.Refer Page No.25 & 26)

### NUTS-BOLTS

**XQ** AISI 304SS    **XR** AISI 316SS

### PROTECTION ON WETTED PARTS

**VS** PTFE LINING ON BOTTOM CHAMBER("I"SECTION) -2mm THICK (Max.Up to 150°C)  
**VV** PTFE PROTECTION FOR DIAPHRAGM (Max.Up to 150°C max up to 100 bar)  
**VZ** PTFE COATING ON DIAPHRAGM (Max.Up to 315°C)

### FILLING LIQUID

**US** FLUROLUBE 4.2 [-45 to 175°C]    **UX** SILICON DC 200[-40 to 205°C](Standard)    **VB** SYLTHERM XLT [-100 to 260°C]  
**UT** FLUROLUBE 6.3 [-40 to 235°C]    **UY** SILICON DC 704 [10 to 337°C]    **VC** HALOCARBON OIL\*  
**UU** FLUROLUBE FS-5 [-28 to 148°C]    **UZ** SILICON DC 710 [7 to 371°C]    **VD** LRS9 [-40 to 400°C]  
**UV** FOOD GRADE OIL [-20 to 140°C]    **VA** SYLTHERM 800 [-40 to 315°C]

### REMOTE MOUNTING (With Capillary of Max. Up to 15 Mtrs.)

SPECIFY IN METERS (e.g 1.5=1.5 METERS 2.0=2 METERS)

### CAPILLARY

**PE** AISI 304 SS    **PG** AISI 316 SS

### CAPILLARY COVERED WITH ARMOUR (Applicable with PE or PG if selected)

**PF** AISI 304 SS    **PH** AISI 316 SS    **PI** PVC

### OTHER OPTIONS

**TB** HELIUM LEAK TEST    **TC** DRY SEAL ONLY WITHOUT INSTRUMENT    **GH** MATERIAL TEST CERTIFICATE\*

Ordering Example: **D-08-XXX-XX-XX-XX-XX-XX-XX-XX-XX-XX-3 Mtr-XX-XX-XX**



## SPECIAL FEATURES

Flush Diaphragm  
Easy Flushing (Through Flushing Ring)  
Most Suitable for Slurry , Corrosive & High  
Viscous Service Flushing Ring, Flange &  
Diaphragm are available in various  
Type of SS & Exotic Materials.

## SPECIFICATIONS

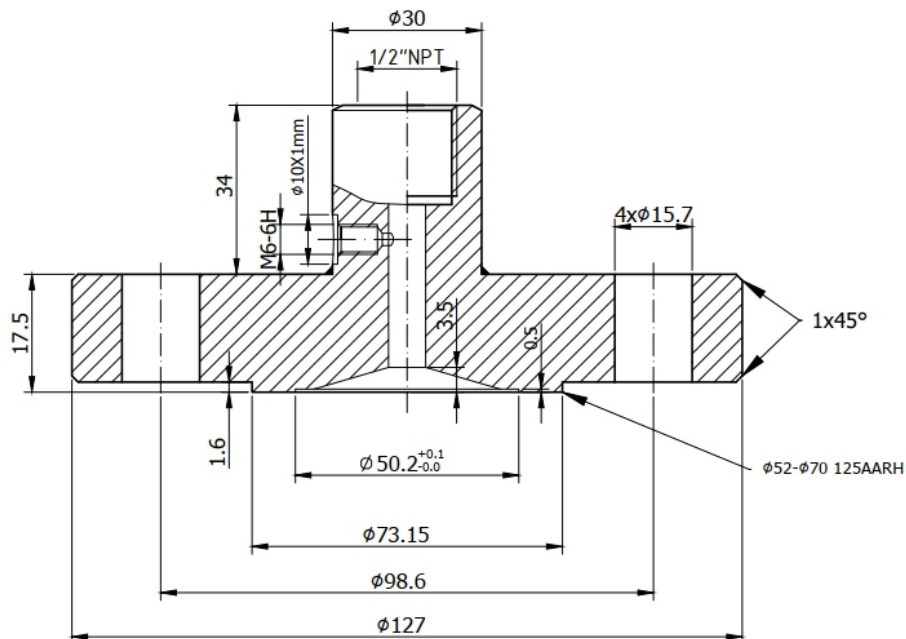
Range: -1 kg/cm<sup>2</sup> to 0 & 0 to 250 kg/cm<sup>2</sup>\*  
Process Temperature: -40°C to 200°C or as per fill fluid  
Instrument Connection: 1/2"NPT(F)  
Process Connection: Flange (as per DIN/BS/ANSI/JIS) 125-250 A/  
Diaphragm: AISI 316L SS  
Flange: AISI 316 SS  
Fill Fluid: Silicon Oil -DC 200  
Sealing Gasket: PTFE



## APPLICATIONS

Diaphragm seals are provided in the Instrument like  
Pressure Gauges ,Switches, Transmitters in order to  
isolate the sensing element from the main service  
due to It's Corrosive ,Viscous and Sedimented nature  
and to avoid clogging and solidification.

These kind of seals are widely used in the Viscous  
& Corrosive services where flushing is required  
periodically & frequently.



Example

## HOW TO ORDER

### BASIC MODEL

#### RANGE

**S21** -1 to 0 kg/cm<sup>2</sup> & 0 to 100 kg/cm<sup>2</sup>      **S22** 100 kg/cm<sup>2</sup> to 250 kg/cm<sup>2</sup>

### INSTRUMENT CONNECTION

**VP** 3/8"BSP(F)   **VL** 1/2"BSP(F)   **VM** 1/2"NPT(F)(Standard)

### TOP CHAMBER

**XW** AISI 304 SS (Standard)   **YA** AISI SS316L SS   **XY** AISI 316 SS   **YC** CARBON STEEL

### DIAPHRAGM

**UJ** AISI 316L SS (Standard)   **UL** HASTELLOY 'C276'   **UR** TITANIUM   **UW** INCONEL 600  
**UM** MONEL   **UP** SILVER\*   **UQ** TANTALUM   **UN** SUPER DUPLEX

### SEALING GASKET

**VI** PTFE (Standard)   **YR** METAL   **YQ** Inconel Silver Plate for Max 400°C (High Temp.Oil)

### BOTTOM CHAMBER ( I SECTION)

**TK** AISI 304 SS   **TT** HASTELLOY 'C'  
**TM** AISI 316 SS(Standard)   **TN** CARBON STEEL  
**TL** AISI 316L SS   **TZ** PVC\*  
**UH** TITANIUM   **UA** PVDF\*  
**TX** MONEL   **TY** POLYPROPELENE\*

MOC OF BOTTOM CHAMBER	PRESSURE V/S TEMPERATURE					
	20°C	40°C	60°C	80°C	100°C	120°C
PVDF	10 kg/cm <sup>2</sup>	10 kg/cm <sup>2</sup>	10 kg/cm <sup>2</sup>	7 kg/cm <sup>2</sup>	4 kg/cm <sup>2</sup>	2 kg/cm <sup>2</sup>
PP	10 kg/cm <sup>2</sup>	10 kg/cm <sup>2</sup>	6 kg/cm <sup>2</sup>	4 kg/cm <sup>2</sup>	1 kg/cm <sup>2</sup>	NA
PVC	10 kg/cm <sup>2</sup>	10 kg/cm <sup>2</sup>	4 kg/cm <sup>2</sup>	1 kg/cm <sup>2</sup>	NA	NA

### PROCESS CONNECTION

As per DIN / BS / ANSI / JIS (Select Code from Flange Table.Refer Page No.25 & 26)

### NUTS-BOLTS

**XQ** AISI 304SS   **XR** AISI 316SS

### PROTECTION ON WETTED PARTS

**VS** PTFE LINING ON BOTTOM CHAMBER('I'SECTION) -2mm THICK (Max.Up to 150°C)  
**VV** PTFE PROTECTION FOR DIAPHRAGM (Max.Up to 150°C max up to 100 bar)  
**VZ** PTFE COATING ON DIAPHRAGM (Max.Up to 315°C)

### FILLING LIQUID

**US** FLUROLUBE 4.2 [-45 to 175°C]   **UX** SILICON DC 200[-40 to 205°C](Standard)   **VB** SYL THERM XLT [-100 to 260°C]  
**UT** FLUROLUBE 6.3 [-40 to 235°C]   **UY** SILICON DC 704 [10 to 337°C]   **VC** HALOCARBON OIL\*  
**UU** FLUROLUBE FS-5 [-28 to 148°C]   **UZ** SILICON DC 710 [7 to 371°C]   **VD** LRS9 [-40 to 400°C]  
**UV** FOOD GRADE OIL [-20 to 140°C]   **VA** SYL THERM 800 [-40 to 315°C]

### REMOTE MOUNTING (With Capillary of Max. Up to 15 Mtrs.)

SPECIFY IN METERS (e.g 1.5=1.5 METERS 2.0=2 METERS)

### CAPILLARY

**PE** AISI 304 SS   **PG** AISI 316 SS

### CAPILLARY COVERED WITH ARMOUR (Applicable with PE or PG if selected)

**PF** AISI 304 SS   **PH** AISI 316 SS   **PI** PVC

### OTHER OPTIONS

**TB** HELIUM LEAK TEST   **TC** DRY SEAL ONLY WITHOUT INSTRUMENT   **GH** MATERIAL TEST CERTIFICATE\*

**Ordering Example: D-09-XXX-XX-XX-XX-XX-XX-XX-XX-XX-3 Mtr-XX-XX-XX**

## SPECIAL FEATURES

Welded Diaphragm  
 Most suitable for Slurry & Corrosive Service  
 Flushing Ring , Flange & Diaphragm are available in various type of SS & Exotic Materials.

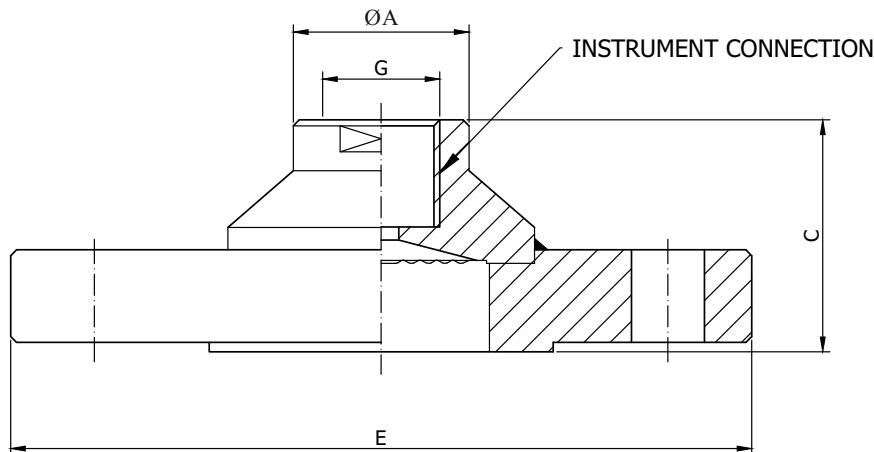
## SPECIFICATIONS

Seal Type: S26= -1 to 0 kg/cm<sup>2</sup> & 0 to 250 kg/cm<sup>2</sup> (Non PTFE Lined)(Standard)  
 S27= -1 to 0 kg/cm<sup>2</sup> & 0 to 40 kg/cm<sup>2</sup> (PTFE Lined)\*  
 Process Temperature: Max.150°C for PTFE Lined  
 -40°C to 200°C or without PTFE Lined  
 Instrument Connection: 1/2"NPT(F)  
 Process Connection: Flange (as per DIN/BS/ANSI/JIS) 125-250 AARH  
 Fill Fluid: Silicon Oil-DC 200  
 Diaphragm: AISI 316L SS  
 Top Chamber: AISI 316 SS  
 Flange: AISI 316 SS



## APPLICATIONS

Diaphragm seals are provided in the Instrument like Pressure Gauges ,Switches, Transmitters in order to isolate the sensing element from the main service due to It's Corrosive ,Viscous and Sedimented nature and to avoid clogging and solidification. These kind of seals are widely used in the Viscous & Corrosive services where flushing is required periodically & frequently.



A	C	E	G	J
30	44.5	**	1/2"NPT(F)	***

\*\* As per standard flange table ANSI, DIN, BS, JIS, Etc.  
 \*\*\* Diaphragm Dia. to suit Flange

		Example		
<b>HOW TO ORDER</b>				
<b>BASIC MODEL</b>		D-10		
<b>SEAL TYPE</b>				
<b>S26</b> -1 to 0 kg/cm <sup>2</sup> & 0 to 250 kg/cm <sup>2</sup> (Non PTFE Lined) (Standard)*	<b>S27</b> -1 to 0 kg/cm <sup>2</sup> & 0 to 40 kg/cm <sup>2</sup> (PTFE Lined)	XXX		
<b>INSTRUMENT CONNECTION</b>				
<b>VP</b> 3/8"BSP(F)	<b>VL</b> 1/2"BSP(F)	<b>VM</b> 1/2"NPT(F)(Standard)	XX	
<b>TOP CHAMBER</b>				
<b>XW</b> AISI 304 SS (Standard)	<b>YA</b> AISI SS316L SS	<b>XY</b> AISI 316 SS	<b>YC</b> CARBON STEEL	XX
<b>DIAPHRAGM</b>				
<b>UJ</b> AISI 316L SS (Standard)	<b>UL</b> HASTELLOY 'C'	<b>UR</b> TITANIUM	<b>KE</b> PTFE*	XX
<b>UM</b> MONEL	<b>UP</b> SILVER	<b>UQ</b> TANTALUM		
<b>FLANGE MATERIAL</b>				
<b>TK</b> AISI 304 SS	<b>TN</b> CARBON STEEL	<b>UH</b> TITANIUM	<b>TM</b> AISI 316 SS (Standard)	XX
<b>TL</b> AISI 316L SS	<b>TX</b> MONEL	<b>TT</b> HASTELLOY C	<b>TM</b> TANTALUM	
<b>PROCESS CONNECTION</b>				
As per DIN / BS / ANSI / JIS (Select Code from Flange Table.Refer Page No.25 & 26)			XX	
<b>PROTECTION ON WETTED PARTS</b>				
<b>VS</b> PTFE LINING ON BOTTOM CHAMBER("I"SECTION) -2mm THICK (Max.Up to 150°C)			XX	
<b>VV</b> PTFE PROTECTION FOR DIAPHRAGM (Max.Up to 150°C max up to 100 bar)				
<b>VZ</b> PTFE COATING ON DIAPHRAGM (Max.Up to 315°C)				
<b>FILLING LIQUID</b>				
<b>US</b> FLUROLUBE 4.2 [-45 to 175°C]	<b>UX</b> SILICON DC 200[-40 to 205°C] <sub>(Standard)</sub>	<b>VB</b> SYLTHERM XLT [-100 to 260°C]	XX	
<b>UT</b> FLUROLUBE 6.3 [-40 to 235°C]	<b>UY</b> SILICON DC 704 [10 to 337°C]	<b>VC</b> HALOCARBON OIL*		
<b>UU</b> FLUROLUBE FS-5 [-28 to 148°C]	<b>UZ</b> SILICON DC 710 [7 to 371°C]			
<b>UV</b> FOOD GRADE OIL [-20 to 140°C]	<b>VA</b> SYLTHERM 800 [-40 to 315°C]			
<b>REMOTE MOUNTING (With Capillary of Max. Up to 15 Mtrs.)</b>				
SPECIFY IN METERS (e.g 1.5=1.5 METERS 2.0=2 METERS)			3Mtr.	
<b>CAPILLARY</b>				
<b>PE</b> AISI 304 SS	<b>PG</b> AISI 316 SS		XX	
<b>CAPILLARY COVERED WITH ARMOUR (Applicable with PE or PG if selected)</b>				
<b>PF</b> AISI 304 SS	<b>PH</b> AISI 316 SS	<b>PI</b> PVC	XX	
<b>OTHER OPTIONS</b>				
<b>TB</b> HELIUM LEAK TEST	<b>TC</b> DRY SEAL ONLY WITHOUT INSTRUMENT	<b>GH</b> MATERIAL TEST CERTIFICATE*	XX	

**Ordering Example: D-10-XXX-XX-XX-XX-XX-XX-XX-XX-3 Mtr-XX-XX-XX**

## SPECIAL FEATURES

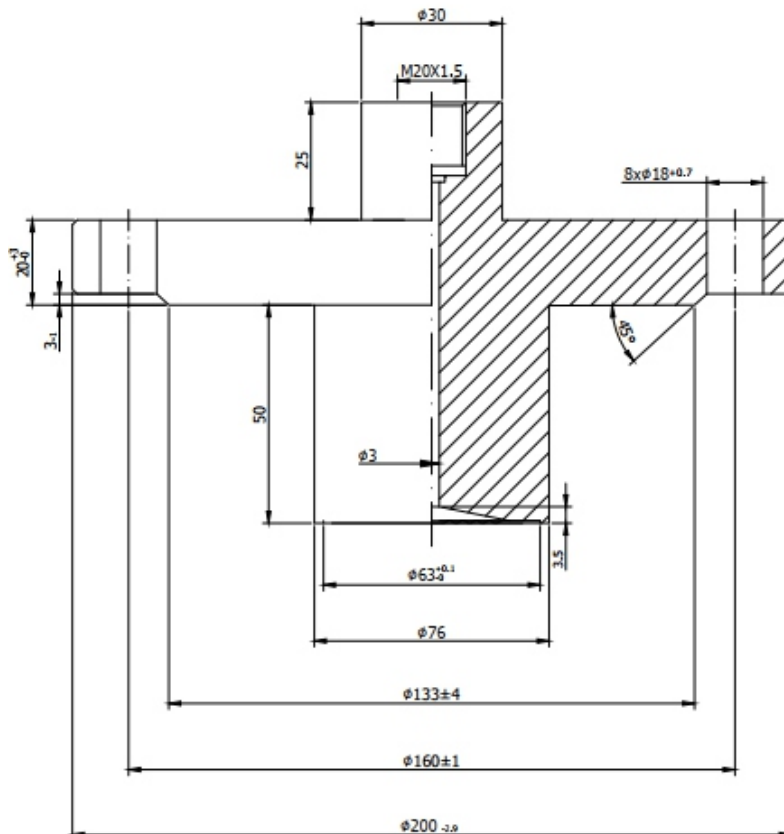
All SS 316 Construction  
Ideal for Slurry / High Viscous fluids.  
Flange & Diaphragm are available in various type of SS & Exotic Materials.

## SPECIFICATIONS

Range: 1 kg/cm<sup>2</sup> to 250 kg/cm<sup>2</sup>\*  
Process Temperature: -40°C to 200°C or as per fill fluid  
Instrument Connection: 1/2"NPT(F)  
Process Connection: Flange (Refer Table)  
Flange Finish: Finish 125-250 AARH  
Diaphragm: AISI 316L SS  
Body: AISI 316 SS  
Flange: AISI 316 SS  
Extension: 50mm (Other extension on request)  
Fill Fluid: Silicon Oil -DC 200

## APPLICATIONS

Diaphragm seals are provided in the Instrument like Pressure Gauges ,Switches, Transmitters in order to isolate the sensing element from the main service due to It's Corrosive ,Viscous and Sedimented nature and to avoid clogging and solidification. These kind of seals are widely used in the Viscous & Corrosive services where flushing is required periodically & frequently.





			Example	
<b>HOW TO ORDER</b>				
<b>BASIC MODEL</b>			D-11	
<b>INSTRUMENT CONNECTION</b>				
<b>VP</b> 3/8"BSP(F)	<b>VL</b> 1/2"BSP(F)	<b>VM</b> 1/2"NPT(F)(Standard)	XX	
<b>DIAPHRAGM</b>				
<b>UJ</b> AISI 316L SS (Standard)	<b>UL</b> HASTELLOY 'C'	<b>UM</b> MONEL	XX	
<b>BODY</b>				
<b>CN</b> MONEL	<b>CO</b> HASTELLOY 'C'	<b>CM</b> AISI 316L SS	<b>CL</b> AISI 316 SS (Standard)	XX
<b>BODY LENGTH (Standard: 50mm &amp; Max. Up to 200mm)</b>				
Specify IN mm (e.g 50mm, 100mm, 150mm & 200mm)			100mm	
<b>PROCESS CONNECTION</b>				
As per DIN / BS / ANSI / JIS (Select Code from Flange Table.Refer Page No.25 & 26)			XX	
<b>FLANGE MATERIAL</b>				
<b>TL</b> AISI 316L SS	<b>TX</b> MONEL	<b>TT</b> HASTELLOY C	<b>TM</b> AISI 316 SS (Standard)	XX
<b>PROTECTION ON WETTED PARTS</b>				
<b>VZ</b> PTFE COATING ON DIAPHRAGM (Max.Up to 315°C)			XX	
<b>FILLING LIQUID</b> (*Consult factory for specifications , price and delivery)				
<b>US</b> FLUROLUBE 4.2 [-45 to 175°C]	<b>UX</b> SILICON DC 200[-40 to 205°C](Standard)	<b>VB</b> SYL THERM XLT [-100 to 260°C]	XX	
<b>UT</b> FLUROLUBE 6.3 [-40 to 235°C]	<b>UY</b> SILICON DC 704 [10 to 337°C]	<b>VC</b> HALOCARBON OIL*		
<b>UU</b> FLUROLUBE FS-5 [-28 to 148°C]	<b>UZ</b> SILICON DC 710 [7 to 371°C]			
<b>UV</b> FOOD GRADE OIL [-20 to 140°C]	<b>VA</b> SYL THERM 800 [-40 to 315°C]			
<b>REMOTE MOUNTING (With Capillary of Max. Up to 15 Mtrs.)</b>				
SPECIFY IN METERS (e.g 1.5=1.5 METERS 2.0=2 METERS)			3Mtr.	
<b>CAPILLARY</b>				
<b>PE</b> AISI 304 SS	<b>PG</b> AISI 316 SS		XX	
<b>CAPILLARY COVERED WITH ARMOUR (Applicable with PE or PG if selected)</b>				
<b>PF</b> AISI 304 SS	<b>PH</b> AISI 316 SS	<b>PI</b> PVC	XX	
<b>OTHER OPTIONS</b>				
<b>TB</b> HELIUM LEAK TEST	<b>TC</b> DRY SEAL ONLY WITHOUT INSTRUMENT	<b>GH</b> MATERIAL TEST CERTIFICATE*	XX	

**Ordering Example: D-11-XX-XX-XX-100mm-XXX-XX-XX-XX-3 Mtr-XX-XX-XX**

## SPECIAL FEATURES

All Stainless Steel Construction  
 Continuous Duty  
 Easy to Clean  
 Available with Anti Vibration Spring

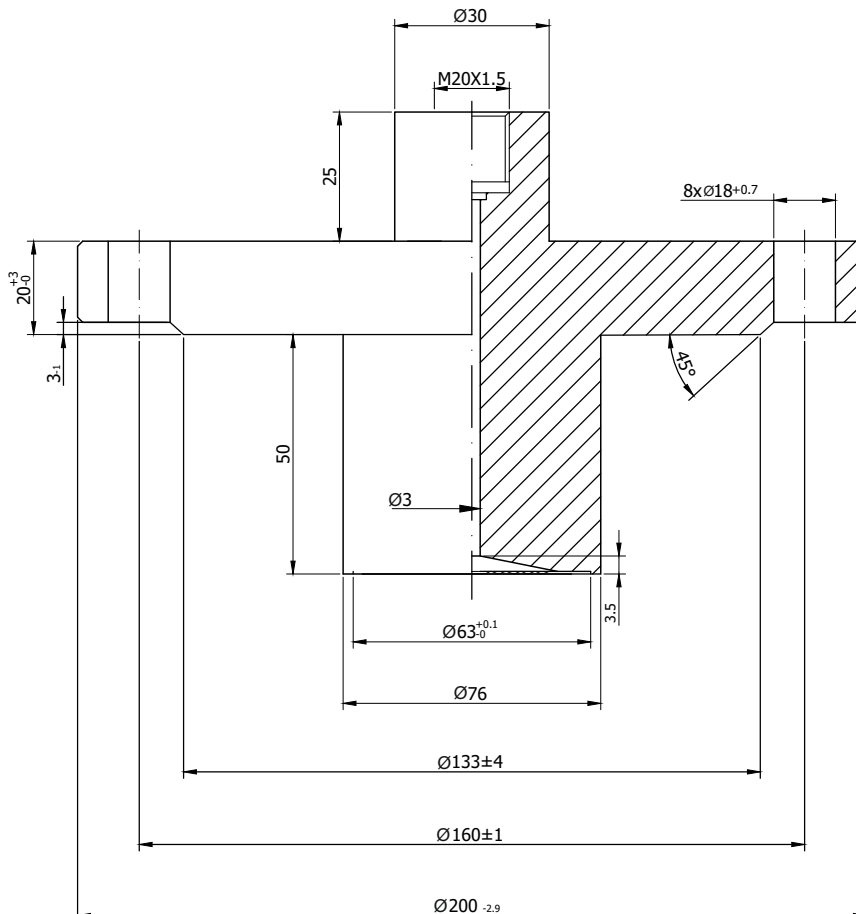
## SPECIFICATIONS

Range: 1 kg/cm<sup>2</sup> to 40 kg/cm<sup>2</sup>\*  
 Process Temperature: -40°C to 200°C or as per fill fluid  
 Instrument Connection: 1/2"NPT(F)  
 Process Connection: As per diagram below  
 Mounting: Direct (Without Spring & Capillary)  
 Diaphragm: AISI 316L SS  
 Body & Floating Ring: AISI 316 SS  
 Fill Fluid: Silicon Oil -DC 200



## APPLICATIONS

Diaphragm seals are provided in the Instrument like Pressure Gauges ,Switches, Transmitters in order to isolate the sensing element from the main service due to It's Corrosive ,Viscous and Sedimented nature and to avoid clogging and solidification. These kind of seals are widely used in the Viscous & Corrosive services where flushing is required periodically & frequently.



## HOW TO ORDER

### BASIC MODEL

Example

D-12

### INSTRUMENT CONNECTION

**VO** 1/4"NPT(F)    **VP** 3/8"BSP(F)    **VL** 1/2"BSP(F)    **VM** 1/2"NPT(F)(Standard)

XX

### ANTI VIBRATION SPRING

**EA2** BOTTOM MOUNTING    **EA3** 90° ANGULAR MOUNTING (BACK MOUNTING)

XXX

### BODY & FLOATING RING

**CL** AISI 316 SS (Standard)    **CM** AISI 316L SS

XX

### DIAPHRAGM

**UJ** AISI 316L SS (Standard)

XX

### PROTECTION ON WETTED PARTS

**VZ** PTFE COATING ON DIAPHRAGM (Max.Up to 315°C)

XX

### FILLING FLUID

**US** FLUROLUBE 4.2 [-45 to 175°C]    **UX** SILICON DC 200[-40 to 205°C]<sub>(Standard)</sub>    **VB** SYLTHERM XLT [-100 to 260°C]  
**UT** FLUROLUBE 6.3 [-40 to 235°C]    **UY** SILICON DC 704 [10 to 337°C]    **VC** HALOCARBON OIL\*  
**UU** FLUROLUBE FS-5 [-28 to 148°C]    **UZ** SILICON DC 710 [7 to 371°C]  
**UV** FOOD GRADE OIL [-20 to 140°C]    **VA** SYLTHERM 800 [-40 to 315°C]

XX

### REMOTE MOUNTING (With Capillary of Max. Up to 2 Mtrs.)

SPECIFY IN METERS (e.g 1.5=1.5 METERS 2.0=2 METERS)

1 Mtr.

### CAPILLARY

**PE** AISI 304 SS    **PG** AISI 316 SS

XX

### CAPILLARY COVERED WITH ARMOUR (Applicable with PE or PG if selected)

**PF** AISI 304 SS    **PH** AISI 316 SS    **PI** PVC

XX

### OTHER OPTIONS

**TB** HELIUM LEAK TEST    **TC** DRY SEAL ONLY WITHOUT INSTRUMENT    **GH** MATERIAL TEST CERTIFICATE\*  
**KF** SPECIAL CONNECTION (Please provide Drawings)

XX

**Ordering Example: D-12-XX-XXX-XX-XX-XX-XX-1 Mtr-XX-XX-XX**

## AS PER ANSI B 16.5

NOMINAL SIZE	RATING/ CLASS	CODE	NOMINAL SIZE	RATING/ CLASS	CODE	NOMINAL SIZE	RATING/ CLASS	CODE	NOMINAL SIZE	RATING/ CLASS	CODE
1/2"	150	B09	1"	150	B21	1 1/2"	150	B33	2 1/2"	150	B45
	300	B10		300	B22		300	B34		300	B46
	600	B11		600	B23		600	B35		600	B47
	900	B12		900	B24		900	B36		900	B48
	1500	B13		1500	B25		1500	B37		1500	B49
	2500	B14		2500	B26		2500	B38		2500	B50
3/4"	150	B15	1 1/4"	150	B27	2"	150	B39	3"	150	B51
	300	B16		300	B28		300	B40		300	B52
	600	B17		600	B29		600	B41		600	B53
	900	B18		900	B30		900	B42		900	B54
	1500	B19		1500	B31		1500	B43		1500	B55
	2500	B20		2500	B32		2500	B44		2500	B56

## AS PER JIS - B 2210

NOMINAL SIZE	RATING/ CLASS	CODE
10	5K	B57
	10K	B58
	40K	B59
15	5K	B60
	10K	B61
	40K	B62
20	5K	B63
	10K	B64
	40K	B65

NOMINAL SIZE	RATING/ CLASS	CODE
25	5K	B66
	10K	B67
	40K	B68
32	5K	B69
	10K	B70
	40K	B71
40	5K	B72
	10K	B73
	40K	B74

NOMINAL SIZE	RATING/ CLASS	CODE
50	5K	B75
	10K	B76
	40K	B77
65	5K	B78
	10K	B79
	40K	B80
80	5K	B81
	10K	B82
	40K	B83

## AS PER BS-10

NOMINAL SIZE	TABLE	CODE	NOMINAL SIZE	TABLE	CODE	NOMINAL SIZE	TABLE	CODE	NOMINAL SIZE	TABLE	CODE
1/2"	D	B84	1"	D	B96	1 1/2"	D	C09	2 1/2"	D	C21
	E	B85		E	B97		E	C10		E	C22
	F	B86		F	B98		F	C11		F	C23
	H	B87		H	B99		H	C12		H	C24
	J	B88		J	C01		J	C13		J	C25
	K	B89		K	C02		K	C14		K	C26
3/4"	D	B90	1 1/4"	D	C03	2"	D	C15	3"	D	C27
	E	B91		E	C04		E	C16		E	C28
	F	B92		F	C05		F	C17		F	C29
	H	B93		H	C06		H	C18		H	C30
	J	B94		J	C07		J	C19		J	C31
	K	B95		K	C08		K	C20		K	C32

**A2** RAISED FACE

**A3** FLAT FACE

**A4** RING TYPE JOINT

### AS PER DIN 2527

DN	PN	CODE	DN	PN	CODE
40	6	A41	65	6	A61
	10	A42		10	A62
	16	A43		16	A63
	25	A44		25	A64
	40	A45		40	A65
	64	A46		64	A66
	100	A47		100	A67
	160	A48		160	A68
	250	A49		250	A69
	400	A50		400	A70
50	6	A51	80	6	A71
	10	A52		10	A72
	16	A53		16	A73
	25	A54		25	A74
	40	A55		40	A75
	64	A56		64	A76
	100	A57		100	A77
	160	A58		160	A78
	250	A59		250	A79
	400	A60		400	A80

### AS PER JIS-B 2210

NOMINAL SIZE	RATING / CLASS	CODE
40A	5K	B72
	10K	B73
	40K	B74

NOMINAL SIZE	RATING / CLASS	CODE
50A	5K	B75
	10K	B76
	40K	B77
65A	5K	B78
	10K	B79
	40K	B80
80A	5K	B81
	10K	B82
	40K	B83

### AS PER DIN 2642

DN	PN	CODE
40	10	A95
50		A96
65		A97
80		A98

### AS PER DIN 2635

DN	PN	CODE
40	40	B05
50		B06
65		B07
80		B08

### AS PER DIN 2633

DN	PN	CODE
40	16	A86
50		A87
65		A88
80		A89



## ABOUT US:

Elite Instruments is a world class manufacturer of measuring instruments and accessories, including pressure gauges, thermometers, level gauges, pressure switches, RTD's, thermocouples and thermowells. We specialize in working together with our customers to develop comprehensive solutions in measurement technology and integrating those solutions into their processes.

Established in 2010, Elite Instruments delivers over 2 million quality products to over 50 countries every year. Worldwide, over 6 million ELITE measuring instruments are currently in use.

Headquartered in China, Kunshan Elite Instruments Company Ltd. also has locations in Singapore and India to better serve our customers,

Elite serves a wide variety of industries worldwide, including:

1. Oil and Gas
2. Chemical and Petrochemical
3. Food and Pharmaceutical
4. Water and Wastewater
5. Engineering and Process

Elite also specializes in developing custom built OEM products as per customer requirements. Our proficient team of engineers will work to bring your custom design to life, or work with you to create new products designed meet your exact needs.

Our customers have testified that the Quality, workmanship, appearance and packaging of Elite products are second to none.

Elite Instruments is ISO 9001 :2008 certified with many products holding ATEX approval, per 2014/34/EU Our state of the art production, testing and warehouse facilities ensure Elite exceeds customer expectations for quality and delivery.

Elite's commitment to quality is demonstrated by our investment in world class production and testing equipment.

Our commitment to quality is also demonstrated in our procedures. All Elite products undergo rigorous quality inspection before, during and post-production to ensure 100% of products meet customer demands and specifications.

Elite Instruments' customer service is fast and flexible. We always put our CUSTOMER FIRST. Let us prove that we are the best choice for your supplier of measuring instruments.

Please visit our website [www.elite-instrument.com](http://www.elite-instrument.com) or send your enquires to [sales@elite-instrument.com](mailto:sales@elite-instrument.com)

Please visit youtube page :

<https://youtu.be/72MgbJNO5fw>

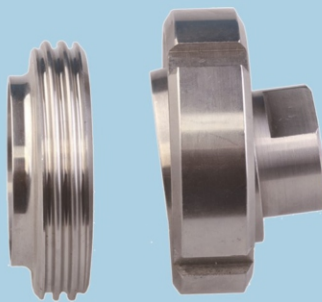


# DIAPHRAGM SEALS

- All wetted parts SS 316L confirming to NACE MR 0175
- All diaphragm are laser welded with body
- All Sanitary seals are confirming to sanitary applications
- All the seals are helium leak tested
- Connected with gauges in MONEL ,HASTELLOY C 276,TITANIUM, TANTALUM,INCONEL 600,SILIVER
- We offer diaphragm seals till 400 bar



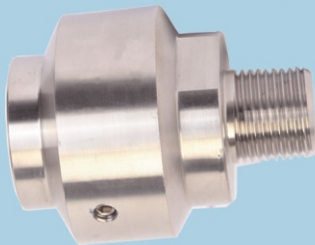
**D-02**  
**DIRECT COUPLE TYPE**  
 Min Pressure :-30inHg  
 Max.Pressure:6,000 psi



**D-04**  
**FLUSH DIAPHRAGM SANITARY TYPE**  
 Min Pressure :-30inHg  
 Max.Pressure:600 psi



**D-05**  
**SCREWED FLUSH TYPE**  
 Min Pressure :-30inHg  
 Max.Pressure: 900 psi



**D-06**  
**HEAVY DUTY MINI SEAL**  
 Min Pressure :-30inHg  
 Max.Pressure:9,000 psi



**D-07**  
**SANITARY SEAL,CLAMP TYPE**  
 Min Pressure :-30inHg  
 Max.Pressure:600 psi



**D-09**  
**DIRECT FLANGED FLUSHING TYPE**  
 Min Pressure :-30inHg  
 Max.Pressure:4,000 psi



**D-08**  
**FLANGE," I " SECTION TYPE**  
 Min Pressure :-30inHg  
 Max.Pressure:6,000 psi



**D-11**  
**EXTENDED NECK TYPE**  
 Min Pressure :-30inHg  
 Max.Pressure:4,000 psi



**D-12**  
**PULP SEAL,FLOATING RING TYPE**  
 Min Pressure :-30inHg  
 Max.Pressure:600 psi





## **Manufacturing Units**

### **KUNSHAN ELITE INSTRUMENTS CO.,LTD**

No.10 Jinlu Road,Jinxi Town,Kunshan City,**Jiangsu Province,CHINA** 215324

Tel.+86 512 57228705 Fax: +86 512 57228707 ,Mobile: +86 13586509674

Email : sales@elite-instrument.com / snreddy@elite-instruments.com

### **HANSHAN ELITE INSTRUMENTS CO.,LTD**

No.5, Science And Technology Business Incubator, Hanshan Economic Development Zone, Ma'An Shan City, **An Hui Province, China**-238100

Tel.+86 555-4378777 Fax:+86 555-4378777 ,Mobile: +86 13586509674

Email : sales@elite-instrument.com / snreddy@elite-instruments.com

### **ELITE INSTRUMENTS**

Special Plot No.3 ,Phase-2 APIIC Industrial Park,Peddapuram 533437-

East Godavari District,Andhra Pradesh,**INDIA**

Tel.+91 08852-294678 ,Mobile: +91 810603131

Email : sales@elite-instrument.com / snreddy@elite-instruments.com

### **ELITE INSTRUMENTS PTE.,LTD**

Blk 122,#03-20 Richfield Industrial Centre,Eunos Avenue 7,

**SINGAPORE**-409574

Tel.+65 81617572 ,Mobile: +86 13586509674

Email : sales@elite-instrument.com / snreddy@elite-instruments.com

[www.elite-instrument.com](http://www.elite-instrument.com)

[www.elite-instruments.com](http://www.elite-instruments.com)