

## SPECIAL FEATURES

Pigtoil, Coil and "U" Type Shapes  
 Maximum Temperature up to 400°C  
 Nominal Pressure up to 160 bar  
 Tig Welded & Hydro Tested  
 Made with Seamless Pipe.



## APPLICATIONS

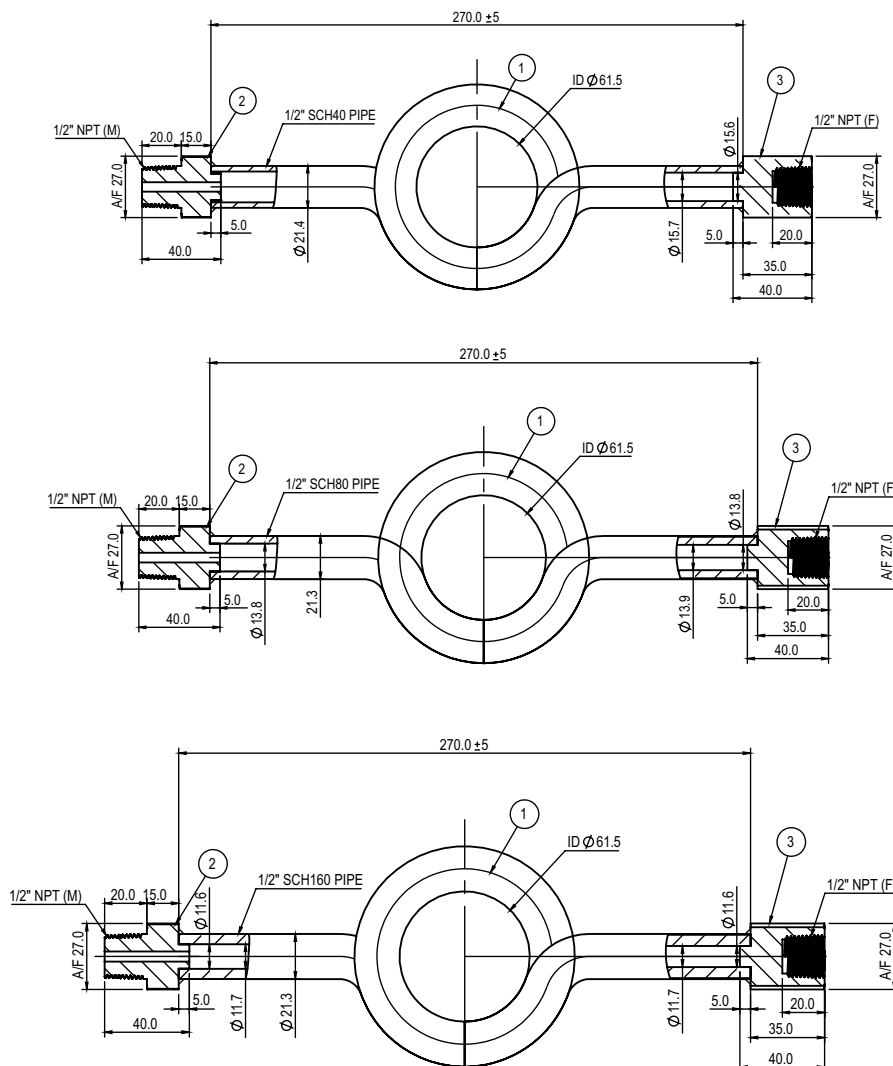
Siphons are used mainly to protect Pressure Instruments, Gauges, Switches and Transmitters directly coming in contact with high temperature process fluids or vapours. These are mounted between process and Pressure Instrument, They reduce process pulsation and generate cooling effect to save the Instrument.

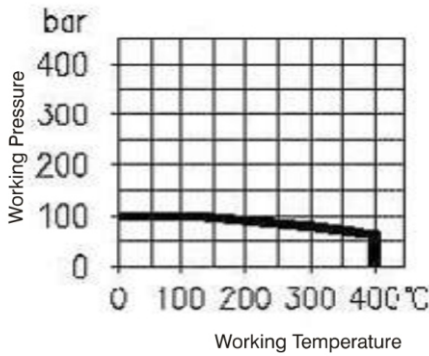
## SPECIFICATIONS

BODY MATERIAL
AISI 316 Stainless Steel

PIPE SIZE
1/2" , Schedule 40

OPERATING PRESSURE
100 bar at 120°C





### PIGTAIL TYPE

Form	Body Material	Size	Pressure Rating (Bar)	Temp. Rating
	Steel, Sch.40	1/4" NPT	34.47	204.44
	AISI 316 SS	1/4" NPT	34.47	204.44

### COIL TYPE

Form	Body Material	Size	Pressure Rating (Bar)	Temp. Rating (°C)
	Steel, Sch.40	1/4" NPT	34.47	204.44
	Steel, Sch.80	1/4" NPT	34.47	204.44
	Steel, Sch.80	1/2" NPT	206.84	204.44
	Steel, Sch.160	1/2" NPT	249.59	371.11
	AISI 316 SS Steel, Sch 80	1/2" NPT	182.71	260
	AISI 316 SS Steel, Sch 160	1/2" NPT	386.1	260

## HOW TO ORDER

### BASIC MODEL (WITH PLAIN END)

#### TYPE

**MR** COIL TYPE                      **MS** PIGTAIL TYPE                      **MT** 'U' TYPE

#### BODY

**CR** CARBON STEEL (RED OXIDE PAINTED)\*      **CQ** AISI 304 SS      **CL** AISI 316 SS(Standard)  
**CS** MILD STEEL (CHROME PLATED)\*              **CM** AISI 316L SS

### PIPE SIZE & SCHEDULE

Pipe Size	Schedule
1/4"	40, 80 & 160
3/8"	40, 80 & 160
1/2"	40, 80 & 160

### CONNECTION TYPE

**MU** SWIVEL FEMALE CONNECTION\*      **MV** ADAPTOR FOR MALE OR FEMALE THREADING  
**CZ** MALE THREAD ON PIPE

#### CONNECTION

<b>2BM.2BF</b> 1/4" BSP (M X F)	<b>2BM.2BM</b> 1/4" BSP (M X M)	<b>2BF.2BF</b> 1/4" BSP (F X F)
<b>2NM.2NF</b> 1/4" NPT (M X F)*	<b>2NM.2NM</b> 1/4" NPT (M X M)	<b>2NF.2NF</b> 1/4" NPT (F X F)*
<b>3BM.3BF</b> 3/8" BSP (M X F)	<b>3BM.3BM</b> 3/8" BSP (M X M)	<b>3BF.3BF</b> 3/8" BSP (F X F)
<b>3NM.3NF</b> 3/8" NPT (M X F)*	<b>3NM.3NM</b> 3/8" NPT (M X M)	<b>3NF.3NF</b> 3/8" NPT (F X F)*
<b>4BM.4BF</b> 1/2" BSP (M X F)(Standard)	<b>4BM.4BM</b> 1/2" BSP (M X M)	<b>4BF.4BF</b> 1/2" BSP (F X F)*
<b>4NM.4NF</b> 1/2" NPT (M X F)(Standard)*	<b>4NM.4NM</b> 1/2" NPT (M X M)	<b>4NF.4NF</b> 1/2" NPT (F X F)*
<b>4NM.PE</b> 1/2" NPT (M)X PLAIN END		

#### OPTIONS

**PV** WITH IBR APPROVAL      **GH** MATERIAL TEST CERTIFICATES      **CW** MARKING BY LASER  
**CX** MARKING BY ENGRAVING

**Ordering Example: AC-06-XX-XX- (1/4-40)-XX-XXX.XXX-XX**

Example

AC-06

XX

XX

(1/4-40)

XX

XXX.XXX

XX